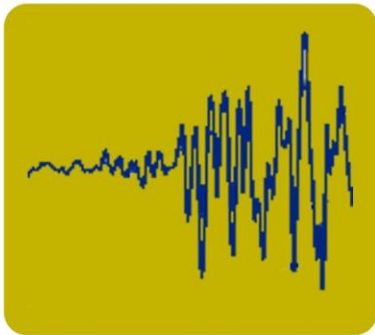




BALBOA ART CONSERVATION CENTER

WESTERN REGION FIELD SERVICE OFFICE

OREGON GUIDE TO EMERGENCY PREPAREDNESS RESOURCES



Edited by: Elise Ciez
Western Region Field Service Project Manager
Funded by the National Endowment for the Humanities
April 2011

Based on:
Conservation Center for Art and Historic Artifacts,
Preservation Services Office
“Philadelphia Area Emergency Response Resources List”
January 2001

Balboa Art Conservation Center’s (BACC) Western Region Field Service Program is made possible by a grant from the National Endowment for the Humanities, a Federal Agency.

Oregon Guide to
Emergency Preparedness Resources
Copyright © April 2011
Compiled by

Balboa Art Conservation Center
P.O. Box 3755
San Diego, CA 92163-3755
(619) 236-9702 - Tel.
(619) 236-0141 - Fax
www.bacc.org

BACC was formed to aid in the preservation of works of art and other objects of cultural interest, exclusively for charitable, scientific, and educational purposes. General purposes are:

- To coordinate and assist in carrying out the conservation programs of charitable, scientific, or educational organizations that own or have custody of works of art or other objects of cultural interest, and thereby may become BACC members, and to render conservation services for them.
- To investigate materials and equipment, and to conduct studies and tests, in order to develop methods to protect, preserve, and maintain the integrity of, and to improve the condition of, works of art and objects of cultural interest.
- To improve and disseminate knowledge of the theory and practice of conservation in relation to works of art and objects of cultural interest.
- To receive and accept donations, gifts, and bequests in order to further the exempt purposes of the corporation.



In honor of MayDay 2011, this PDF file is being made available to encourage and assist institutions in their efforts to better prepare for a disaster.

Table of Contents

I. NATIONAL AND REGIONAL RESOURCES FOR INFORMATION.....	2
II. ONLINE RESOURCES FOR EMERGENCY RESPONSE PLANNING.....	21
III. EMERGENCY RESPONSE SERVICE PROVIDERS.....	25
IV. EMERGENCY SUPPLY AND EQUIPMENT VENDORS.....	39
V. CONSERVATORS.....	52
VI. SPECIAL CIRCUMSTANCE: MOLD RECOVERY.....	57
VII. FUNDING RECOVERY EFFORTS.....	62
APPENDIX A: VULNERABILITY ASSESSMENT.....	65
APPENDIX B: SUPPLIES AND EQUIPMENT TO BEGIN RECOVERY EFFORT.....	68
APPENDIX C: SUPPLIES AND EQUIPMENT TO BEGIN RECOVERY FROM MOLD.....	69
APPENDIX D: EMERGENCY CONTACT LIST.....	70
APPENDIX E: TELEPHONE TREE.....	72
APPENDIX F: BIBLIOGRAPHY.....	74
APPENDIX G: CHANGES AND COMMENTS RESPONSE FORM.....	75

INTRODUCTION

The Balboa Art Conservation Center (BACC) is a regional, cooperative, nonprofit conservation center serving the four-state Western Region: California, Arizona, Oregon, and Washington. Since 1978, BACC has been providing preservation surveys, consultation services and technical assistance to art museums and galleries, historical societies, historical agencies, historical sites, natural history museums and other collection holding institutions in the West.

In 2001, BACC expanded its preservation field services by opening the Western Region Field Service Office, the first National Endowment for the Humanities funded field service program for material culture collections in the Western Region. As one aspect of this program, BACC provides information and technical assistance related to emergency preparedness and response.

Roof leaks, pest infestation, mold blooms and theft are just a few things that can cause damage to, or loss of, the collections in our cultural institutions. During construction or the updating of building systems, the risks to the collections increase dramatically through system failures, burst pipes, fire hazards, security breakdowns and accumulation of dust and dirt. Changing weather patterns have increased the risk of flooding, tornadoes, snow, ice storms and wildfires. Oregon also has the risk of volcanic activity in the region and subsequent risk of damage from ash and soot. Preparedness is essential for quick response and successful recovery from an emergency.

The purpose of the *Oregon Guide to Emergency Preparedness Resources* is to serve as a resource for every collection holding institution in the state of Oregon. BACC encourages institutions to prepare and update their emergency response plans. The preparation of a plan has several important aspects including identification of high-risk areas and hazardous areas, establishment of procedures and systems to mitigate potential risks, determination of collection priorities, and development of procedures for quick response to limit damage to collections. Without a plan, recovery from a small or large emergency will be more costly in terms of collection loss, treatment for collections, cleanup cost and staff time. Preparation, mitigation and quick and appropriate response will save collections and money.

The Oregon Guide to Emergency Preparedness Resources will help institutions develop an up-to-date Emergency Telephone List and provide the information needed to create and maintain a well-stocked area of supplies and equipment to use in initial recovery efforts. A well-prepared institution will have a much quicker and more efficient response to an emergency. This guide includes Emergency Service Department contacts for all of Oregon's counties as well as for the ten largest cities in the state.

Endorsement Statement

The information contained in this resource guide is not exhaustive and inclusion of products, organizations and/or service providers does not imply endorsement by BACC or the Center's Western Region Field Service Office, nor does omission of any supplier indicate censure.

I. NATIONAL AND REGIONAL RESOURCES FOR INFORMATION

The following local, national and regional organizations provide information on emergency preparedness, safety regulations, insurance information, salvage information and funding opportunities.

American Association of Museums (AAM)

1574 Eye Street NW, Suite 400

Washington, DC 20005

(202) 289-1818

FAX (202) 289-6578

<http://www.aam-us.org/museumresources/ic/index.cfm>

AAM's Information Center provides online resources for AAM members including disaster plan preparedness and recovery, collections hazards, insurance and security.

American Industrial Hygiene Association

2700 Prosperity Avenue, Suite 250

Fairfax, VA 22031

(703) 849-8888

FAX (703) 207-3561

Email: infonet@aiha.org

<http://www.aiha.org>

Information on emergency response, mold and workplace safety; plus a searchable list of consultants.

American Institute for Conservation of Historic and Artistic Works (AIC)

1156 15th St. NW, Suite 320

Washington, DC 20005-1714

(202) 452-9545

FAX (202) 452-9328

Email: info@conservation-us.org

<http://www.conservation-us.org>

AIC is an organization of conservation professionals dedicated to preserving the art and historic artifacts of our cultural heritage. AIC provides a free referral service for locating and selecting conservators, and provides various publications on collection care.

American Library Association (ALA) Headquarters

50 East Huron Street

Chicago, IL 60611

(800) 545-2433

FAX (312) 440-9374

Email: ala@ala.org

<http://www.ala.org>

The ALA is the largest and oldest library association in the world and offers professional services, publications, and online tools to members and nonmembers.

American Red Cross National Headquarters

2025 E Street NW
Washington, DC 20006
(202) 303-5000
<http://www.redcross.org>

Call the American Red Cross for local branch locations, or search the national website using zip code search. Offers assistance, food and shelter for persons affected by an emergency. Conducts health and safety programs for the work place including first aid and CPR training.

American Red Cross - Oregon Pacific Chapter

862 Bethel Drive
Eugene, OR 97402
(541) 344-5244
<http://oregonpacific.redcross.org>

American Red Cross - Oregon Trail Chapter

3131 N. Vancouver Avenue
Portland, OR 97227
(503) 284-1234
Email: info@redcross-pdx.org
<http://www.oregonredcross.org>

American Society of Appraisers (ASA)

555 Herndon Parkway, Suite 125
Herndon, VA 20170
(703) 478-2228 FAX (703) 742-8471
Email: asainfo@appraisers.org
<http://www.appraisers.org>

American Society of Appraisers - Portland Chapter

<http://www.appraisers.org/portland>

Baker County Emergency Management

Baker County Courthouse
1995 Third Street
Baker City, OR 97814
(541) 523-8200 FAX (541) 523-8201
<http://www.bakercounty.org/emergency/emgmt.html>

City of Beaverton Emergency Management

PO Box 4755
Beaverton, OR 97076
(503) 259-1183
Email: emergmngmail@beavertonoregon.gov
<http://www.beavertonoregon.gov/departments/emergency>

Benton County Emergency Services

180 NW 5th Street
Corvallis, OR 97330

(541) 766-6864 FAX (541) 766-6052

<http://www.co.benton.or.us/sheriff/ems>

City of Canby - Police Department

122 N. Holly
Canby, OR 97013

(503) 266-1104 FAX (503) 266-9316

<http://www.canbypolice.com>

Cascades Volcano Observatory

<http://vulcan.wr.usgs.gov>

The Cascades Volcano Observatory is part of the U.S. Geological Survey. This website has information and maps on both past and current volcano activity in the Cascades region.

Cascadia Region Earthquake Workgroup (CREW)

3110 Portage Bay Pl E, Slip G
Seattle, WA 98102

(206) 818-1175

Email: bfreitag@crew.org

<http://www.crew.org>

Centers for Disease Control and Prevention (CDC)

1600 Clifton Road
Atlanta, GA 30333

(800) 232-4636

Email: cdcinfo@cdc.gov

<http://www.cdc.gov>

Centers for Disease Control and Prevention (CDC)

Emergency Preparedness & Response

<http://emergency.cdc.gov>

City of Corvallis

Disaster Preparedness

<http://www.ci.corvallis.or.us/index.php?option=content&task=view&id=338&Itemid=291>

Clackamas County Department of Emergency Management

2200 Kaen Road
Oregon City, OR 97045

(503) 655-8378 FAX (503) 655-8531

During a Disaster Call Clackamas County Phone Bank (503) 655-8224

<http://www.co.clackamas.or.us/emergency>

Clatsop County Emergency Management Division

800 Exchange Street, Suite 410

Astoria, OR 97103

(503) 325-1000

FAX (503) 325-8325

<http://www.co.clatsop.or.us>

Columbia County Homeland Security and Emergency Management

230 Strand Street

St. Helens, OR 97051

(503) 366-3931

Email: emergency.management@co.columbia.or.us

<http://www.co.columbia.or.us/emgt>

Community Emergency Response Team (CERT)

<https://www.citizencorps.gov/cert>

Email: cert@dhs.gov

The CERT program offers disaster response training to volunteer citizens and community groups. One benefit of having a CERT-trained staff member as part of an institution's disaster team is that a CERT-trained first responder will be allowed to access institutions before non-CERT trained responders. Many CERT programs are offered and organized through regional or local existing emergency response organizations (i.e. fire and police departments). As of April 2011, there are 48 CERT programs in Oregon listed on the website.

Confederated Tribes of the Umatilla Indian Reservation

Tribal Emergency Response Commission (TERC)

46411 Timine Way

Pendleton, OR 97801

(514) 429-7609

FAX (541) 429-7609

(541) 278-0550 - Emergencies

<http://www.umatilla.nsn.us/safetydept.html>

<http://terc.umatilla.nsn.us>

Coos County Emergency Management

250 N Baxter

Coquille, OR 97423

(541) 396-3121 ext 398

<http://www.co.coos.or.us/ccem>

Coquille Indian Tribe Emergency Management

3050 Tremont

North Bend, OR 97459

(541) 756-0904

FAX (541) 756-0847

Email: cit@coquilletribe.org

<http://www.coquilletribe.org>

Crook County Emergency Services Management

Sheriff's Office

308 NE 2nd Street

Prineville, OR 97754

(541) 447-6398

FAX (541) 416-0353

<http://sheriff.co.crook.or.us/Divisions/EmergencyManagement/tabid/1202/Default.aspx>

Curry County Emergency Services Department

94235 Moore Street

Gold Beach, OR 97444

(541) 247-3208

FAX (541) 247-2705

http://www.co.curry.or.us/Emergency%20Services/emergency_Services.htm

Department of Homeland Security, Federal Protective Service

Region X

32125 32nd Ave. South

Auburn, WA 98001

(253) 815-4700

<http://www.dhs.gov/index.shtm>

Areas of responsibility for Region X: Oregon, Alaska, Washington and Idaho.

Department of Homeland Security - Citizen Corps

www.citizencorps.gov

Department of Homeland Security - Oregon Office of Homeland Security

<http://www.oregon.gov/OSP/CTS/index.shtml>

Department of Homeland Security - Ready America

<http://www.ready.gov/america/local/or.html>

Deschutes County Sheriff's Office

Emergency Services

63333 W. Highway 20

Bend, OR 97701

(541) 617-3303

(541) 693-6911 - After Hours Non-Emergency

<http://sheriff.deschutes.org/contact-us/Emergency-Contacts>

Douglas County Emergency Services (Division of Sheriff's Office)

1036 SE Douglas Avenue

Roseburg, OR 97470

(541) 440-4448

FAX (541) 440-4470

http://www.dco.com/emergency_management_N.asp

Emergency Email Network

<http://www.emergencyemail.org>

This free public service allows one to sign up for email notification of regional disasters/emergencies.

Environmental Protection Agency (EPA) - Region 10

US EPA, Region 10

1200 Sixth Avenue, Suite 900

Seattle, WA 98101

(800) 424-4372

(206) 553-1200

Email: epa-seattle@epa.gov

<http://www.epa.gov/Region10>

EPA Region 10 serves Oregon, Washington, Alaska, Idaho and Native Tribes. EPA's website has information on emergency management, preparedness and response:

<http://www.epa.gov/ebtpages/emergencies.html>.

Environmental Protection Agency (EPA) - Oregon Operations Office

805 SW Broadway, Suite 500

Portland, OR 97205

(503) 326-3250

FAX (503) 326-3399

<http://www.epa.gov/aboutepa/states/or.html>

City of Estacada - Fire Department (Rural Fire District #69)

P.O. Box 608

Estacada, OR 97023

(503) 630-7712

FAX (503) 630-7757

<http://www.estacadafire.org>

City of Eugene

Emergency Management Program

101 E. Broadway, Suite 450

Eugene, OR 97401

(541) 682-5664

FAX (541) 682-5211

<http://www.eugene-or.gov/portal/server.pt>

Federal Emergency Management Agency (FEMA) HQ

500 C Street SW

Washington, DC 20472

(800) 621-3362

<http://www.fema.gov>

FEMA manages federal response and recovery efforts following a national incident. Call the FEMA Publication Distribution Center at (800) 480-2520 to request publications on response and recovery and disaster assistance.

Federal Emergency Management Agency (FEMA)

Regional Office, Region X

130 228th Street, SW

Bothell, WA 99021

(425) 487-4600

<http://www.fema.gov/about/regions/regionx>

FEMA Region X serves the States of Alaska, Idaho, Oregon and Washington.

Gilliam County Emergency Services

PO Box 685

Condon, OR 97823

(541) 384-2851

FAX (541) 384-2878

<http://www.co.gilliam.or.us/departments/emergency/index.html>

City of Gladstone - Emergency Preparedness

525 Portland Avenue

Gladstone, OR 97027

(503) 656-5225

<http://www.ci.gladstone.or.us/emergency.html>

Grant County Emergency Management

201 S. Humbolt, Box 280

Canyon City, OR 97820

(541) 575-0059

City of Gresham Emergency Management

1333 NW Eastman Parkway

Gresham, OR 97030

(503) 618-2432

FAX (503) 618-2198

<http://www.greshamoregon.gov/city/city-departments/governance-and-management/emergency-management/template.aspx?id=3506>

City of Gresham Fire Department

1333 NW Eastman Parkway

Gresham, OR 97030

(503) 618-2355

<http://greshamoregon.gov/city/city-departments/fire-and-ems>

Harney County Emergency Services

Sheriff's Office

485 North Court Street

Burns, OR 97720

(541) 573-6156

FAX (541) 573-8383

<http://co.harney.or.us/sheriff.html>

Heritage Preservation

1012 14th Street NW, Suite 1200

Washington, DC 20005

(202) 233-0800

FAX (202) 233-0807

Email: taskforce@heritagepreservation.org

<http://www.heritagepreservation.org>

Heritage Preservation serves as a national forum for conservation and preservation activities. Its **Heritage Emergency National Task Force** provides information for cultural institutions and the public on safeguarding America's cultural heritage from the damaging effects of a natural disaster and other emergencies. Heritage Preservation, in partnership with FEMA and the NEA, provides an excellent resource describing federal funding opportunities entitled *Before and After Disasters: Federal Funding for Cultural Institutions*, prepared by the National Task Force on Emergency Response, September 2005 (available as a PDF on the Heritage Preservation website). Other resources, such as the *Field Guide to Emergency Response booklet & DVD*, and the *Emergency Response and Salvage Wheel*, are available for purchase on Heritage Preservation's website.

City of Hillsboro Fire & Rescue Department

240 South 1st Ave

Hillsboro, OR 97123

(503) 681-6166

<http://www.ci.hillsboro.or.us/Fire>

Hood River County Department of Emergency Management

601 State Street

Hood River, OR 97031

(541) 386-1213

Email: karl.tesch@co.hood-river.or.us

<http://www.co.hood-river.or.us>

Inclusive Preparedness Center

1010 Wisconsin Ave. NW, Suite 340

Washington, DC 20007

(202) 338-7158

FAX (202) 338-7216

Email: info@inclusionresearch.org

<http://www.inclusivepreparedness.org>

Resources to help emergency planners develop response plans that take into consideration the needs of people with disabilities.

Institute for Crisis Management (ICM)

455 S. Fourth Street

Louisville, KY 40202

(502) 587-0327

FAX (502) 587-0329

(888) 708-8351

Email: info@crisisexperts.com

<http://www.crisisexperts.com>

Institute for Home & Business Safety (IBHS)

4775 East Fowler Avenue

Tampa, FL 33617

(813) 286-3400

FAX (813) 286-9960

Email: info@ibhs.org

<http://www.disastersafety.org>

IBHS is a nonprofit members association whose mission is to reduce effects of natural disasters and other property losses through research, improved construction, maintenance and preparation measures.

Institute of Museum & Library Services (IMLS)

Office of Museum Services

1800 M Street NW, 9th Floor

Washington, DC 20036-5802

(202) 653-4789

FAX (202) 653-4608

Email: imlsinfo@imls.gov

<http://www.imls.gov>

The IMLS offers federal support for both libraries and museums. Check their website for grant requirements, availability, and other project resources.

Insurance Information Institute

110 William Street

New York, NY 10038

(212) 346-5500

<http://www.iii.org>

Jackson County Emergency Management

10 S. Oakdale, Room 214

Medford, OR 97501

(541) 774-6821

FAX (541) 774-6705

<http://www.co.jackson.or.us/SectionIndex.asp?SectionID=28>

Jefferson County Emergency Services

Jefferson County Sheriff's Office

675 NW Cherry Lane

Madras, OR 97741

(541) 475-6520

FAX (541) 475-3847

<http://www.co.jefferson.or.us>

Josephine County Emergency Management

Josephine County Sheriff's Office

601 NW 5th Street

Grants Pass, OR 97526

(541) 474-5300

FAX (541) 474-5302

<http://www.co.josephine.or.us/SectionIndex.asp?SectionID=138>

Klamath County Emergency Management

403 Pine Street
Klamath Falls, OR 97601
(541) 882-8848 ext. 3501
<http://www.klamathcounty.org/depts/ems>

Lake County Emergency Services

Sheriff's Office
513 Center Street
Lakeview, OR 97630
(541) 947-6027 FAX (541) 947-6029
<http://www.lakecountyor.org/Sheriff.htm>

Lane County Emergency Management

Lane County Sheriff's Office
125 E 8th Avenue
Eugene, OR 97401
(541) 682-6744
<http://www.lanecounty.org/Departments/Sheriff/Office/Emermgmt/Pages/default.aspx>

Library of Congress, Preservation Directorate

101 Independence Ave. SE
Washington, DC 20540
(202) 707-5000
<http://www.loc.gov/preserv>

Lincoln County Emergency Services

225 W. Olive St., Room 203
Newport, OR 97365
(541) 265-4277
<http://www.lincolncountysheriff.net/emergency/index.html>

Linn County Emergency Services

Linn County Sheriff's Office
1115 Jackson St. SE
Albany, OR 97322
(541) 967-3950 FAX (541) 967-8169
<http://www.linnsheriff.org/emergency.html>

Malheur County Emergency Services

151 B Street West
Vale, OR 97918
(541) 473-5120
<http://www.malheurco.org/emergencyservices>

Marion County Emergency Management

5155 Silverton Road, NE
Salem, OR 97305
(503) 588-5108
Email: pio@co.marion.or.us
<http://www.co.marion.or.us/PW/EmergencyManagement>

City of Molalla – Police Services

P.O. Box 248
Molalla, OR 97038
(503) 829-8817 FAX (503) 829-3461
(503) 655-8211 – After Hours Non-Emergency
<http://www.cityofmolalla.com>

Morrow County Emergency Management

PO Box 622
Heppner, OR 97836
(541) 676-5161
<http://www.morrowcountyoregon.com>

Multnomah County Department of Emergency Management

501 SE Hawthorn Blvd, Suite 600
Portland, OR 97214
(503) 988-6700 FAX (503) 988-6095
(503) 988-6700 press “1” – 24/7 Duty Officer
Email: emergency.management@multco.us
<http://web.multco.us/office-emergency-management>

National Earthquake Information Center (NEIC)

United States Geological Survey- NEIC
Box 25046, DFC, MS 966
Denver, CO 80225-0046
(303) 273-8500 FAX (303) 273-8450
<http://earthquake.usgs.gov/regional/neic>
<http://earthquake.usgs.gov/earthquakes/states/index.php?regionID=37> (Oregon earthquake information)
<http://www.pnsn.org/recenteqs/latest.htm> (Pacific Northwest regional earthquake activity map)

National Endowment for the Humanities (NEH)

Division of Preservation and Access

1100 Pennsylvania Avenue NW

Washington, DC 20506

(800) NEH-1121

Email: info@neh.gov

<http://www.neh.gov/>

While the NEH does not have a special grant category for emergency recovery and response, the agency can provide some assistance to institutions for salvage of collections that have been damaged because of a natural disaster. NEH Preservation Assistance Grants (PAG) can be used for institutions to fund consultations with professionals to address specific preservation needs such as developing disaster preparedness and response plans.

National Fire Protection Association (NFPA)

1 Batterymarch Park

Quincy, MA 02169-7471

(617) 770-3000

FAX (617) 770-0700

<http://www.nfpa.org>

NFPA Publishes National Fire Protection Association standards, codes and guidelines, and also the National Electrical Code.

National Fire Protection Association – Northwest Regional Office

70 SW Century Drive, Suite 100-360

Bend, OR 97702

(541) 948-3146

National Flood Insurance Program (NFIP)

Region X Office

(830) 265-7796

(206) 438-2607

Agent: Kristen Minich

Email: kminich@ostglobal.com

<http://www.fema.gov/business/nfip/index.shtm>

Region X serves the states of Alaska, Idaho, Oregon and Washington. Provides information to help individuals assess risk and protect themselves from financial loss in the event of a flood. NFIP distributes an e-newsletter with tips on finding the right insurance policy, being prepared and reducing risk.

National Flood Insurance Program (NFIP) - FloodSmart.gov

(888) 379-9531

FAX (202) 646-2818

Email: FloodSmart@dhs.gov

<http://www.floodsmart.gov>

FloodSmart.gov provides information to help individuals assess risk and protect themselves from financial loss in the event of a flood. Distributes an e-newsletter with tips on finding the right insurance polity, being prepared and reducing risk.

National Institute for Occupational Safety and Health (NIOSH)

395 E Street SW, Suite 9200

Patriots Plaza Building

Washington, DC 20201

(800) 232-4636

FAX (513) 533-8573

<http://www.cdc.gov/niosh/topics/emergency.html>

National Institute for Occupational Safety and Health (NIOSH)

Western States Office

Denver Federal Center

6th Avenue and Kipling Street

Bldg 25 Room 2644

Lakewood, CO 80225

(303) 236-5944

FAX (303) 236-6072

(800) 232-4636

<http://www.cdc.gov/niosh>

NIOSH is part of the Centers for Disease Control (CDC) in the Department of Health and Human Services. NIOSH conducts research in health and safety issues, provides information and training on preventing workplace disease, injury and disability, and tests and certifies respirators. NIOSH services include a Health Hazard Evaluation Program for workplaces.

National Oceanic and Atmospheric Administration (NOAA)

Office of Public & Constituent Affairs

US Department of Commerce

1401 Constitution Avenue NW

Room 5128

Washington, DC 20230

(202) 482-6090

<http://www.noaa.gov>

NOAA's National Weather Service Forecast Office

<http://www.wrh.noaa.gov>

NOAA's website allows one to check local forecast by entering city name. Also links to information on current hazards, weather warnings (local and national), and weather safety.

Occupational Safety and Health Administration (OSHA)

Region X Office

1111 Third Avenue, Suite 715

Seattle, WA 98101-3212

(206) 553-5930

FAX (206) 553-6499

<http://www.osha.gov>

Occupational Safety and Health Administration (OSHA) - Oregon

Portland Area Office
Federal Office Building
1220 Southwest 3rd Avenue, Room 640
Portland, OR 97204
(503) 326-2251 FAX (503) 326-3574

Oregon Department of Forestry

Protection from Fire Program
2600 State Street
Salem, OR 97310
(503) 945-7200 FAX (503) 945-7212
Email: information@odf.state.or.us
<http://egov.oregon.gov/ODF>

Oregon Department of Geology & Mineral Industries (DOGAMI)

800 NE Oregon Street #28, Suite 965
Portland, OR 97232
(971) 673-1555 FAX (971) 673-1562
<http://www.oregongeology.org>

Website tracks earthquakes and other national disasters in the Pacific Northwest, and has links to other natural resources directories. DOGAMI also has an online resource guide for preparing for natural hazards.

Oregon Disaster Medical Team (ODMT)

<http://www.odmt.org>

ODMT an independent, non-profit organization of volunteer healthcare professionals from Oregon and Southwest Washington. The team plans, trains, and responds to provide relief healthcare services when local, county and mutual aid reserves are overwhelmed due to a mass casualty incident or disaster event.

Oregon Emergency Management (OEM)

P.O. Box 14370
Salem, OR 97309-5062
(503) 378-2911 FAX (503) 373-7833
<http://www.oregon.gov/OMD/OEM/index.shtml>

OEM is responsible for coordinating and facilitating emergency planning, preparedness, response and recovery activities with the state and local emergency services agencies and organizations.

Oregon Emergency Management Association (OEMA)

P.O. Box 7309

Beaverton, OR 97007

<http://www.oregonemergency.com>

OEMA serves as forum for ideas, suggestions, and courses of action related to emergency management. OEMA provides a network for sharing training, education, and preparedness information for the benefit of the general public, private industry, and government.

Oregon Emergency Response System (OERS)

P.O. Box 14370

Salem, OR 97309-5062

(503) 373-2911

FAX (503) 373-7833

http://www.oregon.gov/OMD/OEM/tech_resp/oers.shtml

OERS is responsible for coordinating and facilitating emergency planning, preparedness, response and recovery activities with the state and local emergency services agencies and organizations.

Oregon Office of Homeland Security - Counter-Terrorism Section

255 Capitol NE, 4th Floor

Salem, OR 97310

(503) 934-0242

Email: ask.osp@state.or.us

<http://www.oregon.gov/OSP/CTS/index.shtml>

Oregon Voluntary Organizations Active in Disaster (ORVOAD)

(503) 624-1042

Email: info@orvoad.org

<http://www.orvoad.org>

Oregon State Chapter of the National Voluntary Organizations Active in Disaster (NVOAD) and one of four voluntary organizations active in FEMA Region X.

Oregon Partnership for Disaster Resilience

<http://opdr.uoregon.edu>

The Oregon Partnership for Disaster Resilience is a coalition of public, private, and professional organizations working collectively toward the mission of creating a disaster resilient and sustainable state. Links to other organizations, databases, and also links to disaster mitigation plans and state reports.

Polk County Emergency Management

850 Main Street

Dallas, OR 97338

(503) 623-9251

<http://www.co.polk.or.us/EM>

Portland Emergency Management

1001 SW 5th Ave., Suite 650
Portland, OR 97204
(503) 823-4375 FAX (503) 823-3903
<http://www.portlandonline.com/oem>

Public Relations Society of America (PRSA)

33 Maiden Lane 11th Floor
New York, NY 10038-1459
(212) 460-1484 FAX (212) 995-0757
<http://www.prsa.org/Network/FindAFirm>

Regional Alliance for Preservation (RAP)

<http://www.rap-arcc.org>

RAP is a cooperative of the Preservation Field Service Programs that are funded by the NEH. RAP is made up of 13 member organizations that provide cultural institutions with training and education to help with care of their collections. RAP maintains a website with links to each of its affiliated preservation service programs and regional conservation centers located throughout the country. These regional centers provide information, emergency assistance, consultations and conservation treatment. A list of these organizations is included in *Section V. Conservators*.

City of Salem Emergency Information

503-763-3331
<http://www.cityofsalem.net/DEPARTMENTS/FIRE/EMERGENCYMANAGEMENT/Pages/default.aspx>

Sherman County Emergency Services

P.O. Box 139
Moro, OR 97039
(541) 565-3100 FAX (541) 565-3024
Email: emergencyserv@embarqmail.com
http://www.sherman-county.com/govt_er_system.asp

City of Springfield Emergency Management

<http://www.ci.springfield.or.us/FLS/EMP/EmergencyManagementPlan.html>

City of Tigard Emergency Management Program (Public Works Dept.)

13125 SW Hall Blvd
Tigard, OR 97223
(503) 718-2593
http://www.tigard-or.gov/city_hall/departments/public_works/emergency

Tillamook County Emergency Management

5995 Long Prairie Road
Tillamook, OR 97141
(503) 842-3412 FAX (503) 815-3195
<http://www.co.tillamook.or.us/gov/emgmgt>

City of Tualatin Police Department

8650 SW Tualatin Road
Tualatin, OR 97062
Non-Emergency Police Line: (503) 629-0111
Police Business Line: (503) 691-4800
<http://www.ci.tualatin.or.us/departments/police>

Tualatin Valley Fire & Rescue

11945 SW 70th
Tigard, OR 97223
(503) 649-8577 FAX (503) 642-4814
<http://www.tvfr.com>

Tualatin Valley Fire & Rescue's 210 square mile service area includes the cities of Beaverton, Durham, King City, Rivergrove, Sherwood, Tigard, Tualatin, West Linn, and Wilsonville, as well as unincorporated areas in Clackamas, Multnomah, and Washington counties.

Umatilla County Emergency Management

Chemical Stockpile Emergency Preparedness Program (CSEPP)
4700 NW Pioneer Place
Pendleton, OR 97801
(877) 367-2737
<http://www.ucem.us>

Union County Emergency Management

1001 Fourth Street, Suite C
La Grande, OR 97850
(541) 963-1009 FAX (541) 963-1039
<http://www.union-county.org>

United States Geological Survey (USGS)

USGS Western Region Offices
345 Middlefield Road MS 977
Menlo Park, CA 94025
(650) 329-4668
<http://earthquake.usgs.gov/regional/nca>

USGS Western Regional Office

Federal Office Building
909 First Avenue, 8th Floor
Seattle, WA 98104
(206) 220-4600 FAX (206) 220-4624

United States National Archives & Records Administration (NARA)

8601 Adelphi Road
College Park, MD 20740-6001
(866) 272-6272 FAX (301) 837-0483
<http://www.archives.gov>

NARA provides records management, preservation and emergency preparedness assistance for paper-based materials.

Wallowa County Department of Emergency Services

101 S. River, Room 202
Enterprise, OR 97929
(541) 426-4543 ext. 48 FAX (541) 426-0582
Email: wcdes@co.wallowa.or.us
http://www.co.wallowa.or.us/public_safety/emergency_services

Warm Springs Indian Reservation

Fire & Safety
P.O. Box C
Warm Springs, OR 97761
(541) 553-1634 FAX (541) 553-3531
http://www.warmsprings.com/Warmsprings/Tribal_Services/Public_Safety/Fire_Safety/index.html

Wasco County Emergency Services

511 Washington Street, Suite 102
The Dalles, OR 97058
(541) 506-2580 FAX (541) 506-2581
http://www.co.wasco.or.us/county/dept_sheriff_emergency.cfm

Washington County Office of Consolidated Emergency Management (OCEM)

(503) 259-1171
<http://www.ocem.org>

West Coast and Alaska Tsunami Warning Center

Email: wcatwc@noaa.gov
<http://wcatwc.arh.noaa.gov>

Western States Seismic Policy Council (WSSPC)

801 K Street, Suite 1436
Sacramento, CA 95814
(916) 444-6816 FAX (916) 444-8077
Email: wsspc@wsspc.org
<http://www.wsspc.org>

Wheeler County Emergency Management

401 4th Street
Fossil, OR 97830
(541) 763-2380 FAX (541) 763-2026
<http://www.wheelercounty-oregon.com/emanagement.html>

City of Wilsonville Directory

Public Works Department
29799 SW Town Center Loop E
Wilsonville, OR 97070
(503) 682-4092
(866) 252-3614 – After Hours Emergency
<http://www.ci.wilsonville.or.us>

Woodburn Emergency Services

Police Department
1060 Mt. Hood Avenue
Woodburn, OR 97071
(503) 982-2345
<http://www.ci.woodburn.or.us/police/cert.aspx>

Yamhill County Emergency Management

535 NE 5th Street
McMinnville, OR 97128
(503) 434-7340 FAX (503) 474-4909
http://www.co.yamhill.or.us/emerg_mgmt/index.asp

II. ONLINE RESOURCES FOR EMERGENCY RESPONSE PLANNING

Introduction

This selected list of websites includes information about emergency response planning. New websites are continually posted, so periodically exploring the web to find the most current information is helpful.

Endorsement Statement

The information contained in this resource guide is not exhaustive and inclusion of products, organizations and/or service providers does not imply endorsement by BACC or the Center's Western Region Field Service Office, nor does omission of any supplier indicate censure.

WEBSITES

The following websites provide a comprehensive gathering of information about emergency response planning for cultural institutions:

Conservation OnLine

<http://cool.conservation-us.org>

The most comprehensive Internet resource for preservation and conservation related information, including emergency response planning, is **Conservation OnLine (CoOL)**, a project of the Stanford University Libraries Preservation Department. The CoOL website has most of the relevant links to publications, emergency supply lists, emergency plans, case studies, organizations and vendors with emergency response information.

Information available includes:

- Conservation information by subject: disaster planning and response, mold, health and safety, pest management, digital imaging, library binding and mass deacidification, etc.
- How to contact conservation related organizations and suppliers/vendors
- Contact information for people active in conservation and preservation
- Archives of the Conservation DistList (Conservation Discussion Group), searchable by subject, in addition to archives of other conservation mailing lists

dPlan - The Online Disaster Planning Tool

(NEDCC- Northeast Document Conservation Center)

<http://www.dplan.org>

dPlan is a free online tool to help institutions create a custom disaster plan. This useful tool is especially helpful for small to medium-sized collections-holding institutions. dPlan was launched in 2006 and funded by the Institute of Museum & Library Services (IMLS) and the National Center for Preservation Technology & Training (NCPTT).

Regional Alliance for Preservation (RAP)

<http://www.rap-arcc.org>

RAP is a cooperative of the Preservation Field Service Programs that are funded by the NEH. RAP is made up of 13 member organizations that provide cultural institutions with training and education to help with care of their collections. RAP maintains a website with links to each of its affiliated preservation service programs and regional conservation centers located throughout the country. These regional centers provide information, emergency assistance, consultations and conservation treatment.

Federal Emergency Management Agency (FEMA)

<http://www.fema.gov/business/guide/index.shtm>

FEMA's "Emergency Management Guide for Business and Industry" is a comprehensive resource outlining guidelines for emergency planning, response and recovery for companies of all sizes.

LYRASIS

<http://www.lyrasis.org>

LYRASIS is the nation's largest regional non-profit membership organization serving libraries and information professionals. Website provides disaster mitigation and recovery resources, including technical leaflets and other publications, videos, and disaster materials.

Northeast Document Conservation Center (NEDCC)

<http://www.nedcc.org>

The Northeast Document Conservation Center is the largest regional conservation center in the US. Areas of expertise include paper, book and photograph conservation. NEDCC has produced a number of emergency management technical leaflets for libraries and archives, which are available online.

Ready.gov (Office of Homeland Security)

<http://www.ready.gov>

JOURNALS

Several journals and newsletters available on the Internet contain articles on emergency preparedness, response and hazard identification.

Abbey Newsletter

<http://cool.conservation-us.org/byorg/abbey/an>

Contingency Planning & Management

<http://www.contingencyplanning.com>

Disaster Recovery Journal

<http://www.drj.com>

Western Association for Art Conservation Newsletter

<http://cool.conservation-us.org/waac/wn/>

RELEVANT DISCUSSION LISTS

Several Discussion Lists available on the Internet contain articles on emergency preparedness, response and hazard identification.

CONSERVATION DIST LIST

Online forums for quick dissemination/discussion of conservation related topics. Participants include book conservators, preservation administrators, curators and conservation scientists. It is advisable to be aware of who is responding to your query.

To subscribe: Send a one line note to request@cool.conservation-us.org. The text of your message should read: subscribe consdist YourFirstName YourLastName

ARCHIVES-L

An electronic discussion list focusing on topics of interest to archives professionals. A wide range of conservation topics is covered each day, particularly the preservation of materials.

To subscribe: Go to http://www.archivists.org/listservs/arch_listserv_terms.asp and follow the instructions.

To search the archives of this listserv: <http://forums.archivists.org/read/?forum=archives>

MUSEUM-L

This is an electronic discussion list focusing on topics of interest to museum professionals. A wide range of museum topics is covered each day, from the business of running a museum, to the preservation of collections.

To subscribe: Go to <http://home.ease.lsoft.com/archives/museum-l.html>, click on “Subscribe or Unsubscribe” and follow the instructions. You can also search the archives.

MUSEUM SECURITY NETWORK

A discussion list dedicated to all aspects of security for museums, libraries and all cultural institutions. There is also a website, <http://www.museum-security.org/> with information about security organizations, publications, articles, safety and salvage plans, fire prevention and security product information. The Museum Security Network is a non-profit organization providing free services.

To subscribe, visit: http://groups.google.com/group/museum_security_network

On this website you will also find the Cultural Property Protection Network, which provides information about incidents involving cultural property such as theft and forgery.

OREGON HISTORIC PRESERVATION

A group email service for Oregon historic preservation professionals. Also has a daily email digest option.

To subscribe or unsubscribe: http://listsmart.osl.state.or.us/mailman/listinfo/hist_pres

PESTLIST (Museum Pest Email List Service)

An e-mail discussion group about IPM (Integrated Pest Management) related topics. This forum is provided by the IPM-WG (Integrated Pest Management Working Group), a group consisting of entomologists, collection managers and conservators.

<http://www.museumpests.net/default.asp>

To subscribe, visit: <http://www.museumpests.net/becomeamember.asp> and enter your name and email to join the IPM mailing list, pestlist.

To search the archives: <http://www.mail-archive.com/pestlist@museumpests.net>

PRESERVENW (Pacific Northwest Collections Preservation)

A group email service with preservation information, training opportunities, and grants information managed via the University of Washington, Seattle.

To subscribe, visit: <http://mailman1.u.washington.edu/mailman/listinfo/preservenw>

RCAAM (Registrar's Committee of the American Association of Museums)

A discussion list available to all Registrars and related positions with a searchable archive.

To subscribe: Go to: <http://www.rcaam.org>. Click on the *Join Listserv* link.

III. EMERGENCY RESPONSE SERVICE PROVIDERS

This section highlights the services that an institution may need in the event of an emergency.

After reviewing the various types of services that may be needed, decide which would be of absolute necessity during an emergency. Speak with several providers to get a good base for comparison on the degree of service that would be provided, experience and cost. Ask for state licensing information, if necessary, and references. You may also want to check with the Better Business Bureau to see if there are any complaints.

Before committing to a certain service provider, have the company visit the institution so that it is fully aware of what the job may involve. Discuss the specific recovery needs for collection materials in storage and exhibition areas, as well as for non-collection spaces and items. Because of the special precautions and procedures involved with collections material, the service providers should be under constant supervision during the recovery process. Make sure that they are aware of this and agreeable to such working conditions.

It would be in the institution's best interest to have a mutually agreed upon contract for service that establishes priority for your institution and provides immediate assistance in the event of a large-scale emergency. This will insure that help arrives when it is most critical. The contract should include a detailed description of the facility, special handling instructions and a clause stating that the institution will handle supervision of all recovery personnel.

Once you have chosen all of the service providers, create an Emergency Telephone List (ETL) for easy reference. Updated copies of the ETL should be kept off-site at the homes of relevant staff and board members. Because addresses, telephone numbers and contacts for vendors can change over time, assign responsibility for updating the list on a regular basis.

Endorsement Statement

The information contained in this resource guide is not exhaustive and inclusion of products, organizations and/or service providers does not imply endorsement by BACC or the Center's Western Region Field Service Office.

AIR PURIFIERS: Check the Yellow Pages under “Air Purifying and Cleaning Equipment and Services.”

ART HANDLING AND MOVING:

Art Work Fine Art Services, Inc.
P.O. Box 84929
Seattle, WA 98124
(206) 762-4040 FAX (206) 762-4044
Email: info@artworkfas.com
<http://www.artworkfas.com>

Art Work Fine Art Services, Inc.
P.O. Box 20306
Portland, OR 97294
(503) 256-7648 FAX (503) 256-8492
Email: info@artworkfas.com
<http://www.artworkfas.com>

Artech, Incorporated
2601 First Avenue
Seattle, WA 98121
(206) 728-8822
Email: info@artechseattle.com
<http://www.artechseattle.com>

Artex Fine Art Service
Washington, DC
(800) 652-7839
<http://www.artexfas.com>

Cooke’s Crating & Fine Art Transportation
3124 East 11th St.
Los Angeles, CA 90023
(323) 268-5101
<http://www.cookescrating.com>

Lile Logistics Fine Art Shipping
West Coast (800) 755-7698
<http://www.lile.net>

US Art
66 Pacella Park Drive
Randolph, MA 02368
(800) 872-7826
<http://www.usart.com>

US Art – Los Angeles Region
921 West Walnut Street
Compton, CA 90220
(877) 528-7278
<http://www.usart.com>

BOARDING-UP SERVICES: Many glass companies have 24-hour emergency boarding up services. Look under “Glass-Automobile, Plate, Window, etc. Dealers.”

BUILDING INSPECTORS: Check the Yellow Pages under “Building Inspections.” The National Institute of Building Inspectors (NIBI) also has an inspector locator on their website: <http://www.nibi.com>.

CARPET CLEANERS: Check the Yellow Pages under “Carpet, Rug and Upholstery Cleaners.” Ask if the carpet cleaner can also provide fans after the carpet is cleaned in a humid environment.

COMPUTER DATA RECOVERY: In order to avoid the need to recover computer data, maintain regular tape or disk back-ups and store them off-site. If damage occurs, recovery companies will provide instructions on how to send the damaged hardware to them for repair. Recovery rates are low so prevention is the best course of action.

Check with your computer representative for recommended computer recovery companies. The companies listed below recover hard drive data from fire and water damage.

Belfor, USA, Inc.

(800) 856-3333 – 24-hour Hotline
<http://www.belfor.com>

Belfor, USA – Bend

1117 SE Centennial Street, Suite 110
Bend, OR 97702
(541) 312-2500

Belfor, USA - Coos Bay

1024A South 2nd Street
Coos Bay, OR 97420
(541) 267-3176

Belfor, USA - Medford

449 Pech Road
Central Point, OR 97502
(541) 664-5454

Belfor, USA - Portland

12823 NE Airport Way
Portland, OR 97230
(503) 408-8880

Belfor, USA - Springfield

587 Shelley Street
Springfield, OR 97477
(541) 726-9905

Belfor, USA services include data recovery from RAID systems, stand alone hard drives, CDs, DVDs and various backup tape formats. Belfor also offers pre-disaster agreements for priority response in the event of a disaster.

Blackmon-Mooring-Steamatic Catastrophe, Inc. (BMS CAT)

303 Arthur Street
Fort Worth, TX 76107
(800) 433-2940 24 Hour Hotline
Email: info@bmscat.com
<http://www.bmscat.com>

Data, magnetic media, x-rays, microfilm and microfiche recovery are some of the disaster recovery services BMS CAT provides. They also have a pre-registration service available.

Document Reprocessors (West Coast Office)

1384 Rollins Road
Burlingame, CA 94010
(650) 401-7711 FAX (650) 401-8711
(800) 437-9464 – 24 Hour Disaster Line
<http://www.documentreprocessors.com>

Disassembly and cleaning of videotapes, surface cleaning, drying, copying to new disk or uploading to tape if necessary. The website outlines early response tips for different materials including audio and videotapes, magnetic media, photographs and paper materials.

DEBRIS REMOVAL: Check the *Yellow Pages* under “Debris Removal”, “Lot Cleaners” or “Rubbish Containers and Hauling”.

DEHUMIDIFICATION:

Belfor, USA, Inc.
(800) 856-3333 – 24-hour Hotline
<http://www.belfor.com>

Belfor, USA – Bend
1117 SE Centennial Street, Suite 110
Bend, OR 97702
(541) 312-2500

Belfor, USA - Coos Bay
1024A South 2nd Street
Coos Bay, OR 97420
(541) 267-3176

Belfor, USA - Medford
449 Pech Road
Central Point, OR 97502
(541) 664-5454

Belfor, USA - Portland
12823 NE Airport Way
Portland, OR 97230
(503) 408-8880

Belfor, USA - Springfield
587 Shelley Street
Springfield, OR 97477
(541) 726-9905

A variety of recovery services, including fire and water recovery, vacuum freeze-drying, dehumidification, and cleaning.

Blackmon-Mooring-Steamatic Catastrophe, Inc. (BMS CAT)

303 Arthur Street
Fort Worth, TX 76107
(800) 433-2940 – 24-hour hotline
Email: info@bmscat.com
<http://www.bmscat.com>

BMS CAT offers a variety of recovery services for facility and contents, including desiccant and refrigerant dehumidification.

Polygon (formerly Munters MCS)
Headquarters
79 Monroe Street
Amesbury, MA 01913
(800) 422-6379 FAX (978) 241-1274
<http://polygongroup.us>

Polygon (formerly Munters MCS)
Seattle District Office
301 30th Street NE, Suite 118
Auburn, WA 98002
(800) 422-6379

Polygon (formerly Munters MCS)
Portland District Office
6240 SW Arctic Drive
Beaverton, OR 97005
(503) 693-3111

Polygon provides a variety of recovery services from water damage including structural drying, humidity control, disaster planning, and consulting.

ELECTRICITY: Check the *Yellow Pages* under “Generators” for temporary power. Some companies have 24-hour emergency service.

FIRE AND WATER DAMAGE SALVAGE: Check local *Yellow Pages* under “Fire and Water Damage Restoration” and Flood Assistance.” Most of these services clean smoke and water damaged buildings and their contents, such as carpets, office furniture, and equipment. They usually are **not** sources for cleaning cultural and historic collections. Before cleaning collections, consult a conservator to review odor and soot removal procedures. Some procedures, such as those using ozone, may not be appropriate for use with cultural and historical collections.

FIRE PROTECTION CONSULTANTS: Check the *Yellow Pages* under “Fire Protection Consultants” for companies that provide risk/hazard analyses, system design and inspections and testing.

FIRST AID INSTRUCTION: The American Red Cross will conduct first aid and CPR training at your facility. You can find your local chapter at <http://www.redcross.org> or check the *Yellow Pages* under “First Aid Instruction” for the Red Cross and other companies that provide similar instruction.

FIRST AID SUPPLIES: Build your own first aid kit with products bought at local drug and discount stores, or buy them fully assembled from suppliers listed in the *Yellow Pages* under “First Aid Supplies.” Some companies may also provide first aid instruction.

FLOOD ASSISTANCE: Check the *Yellow Pages* under “Flood Assistance” for companies that provide 24-hour emergency water removal. Companies with technicians worldwide that also provide water recovery assistance can be found in this section under the topic “Worldwide Response and Recovery Providers.”

FOOD: It will be necessary to feed staff and volunteers who are assisting in the recovery effort. Prepare a list of caterers, restaurants and/or grocery stores with delivery services.

FREEZE-DRYING:

VersaCold

Cascade – Lynden Facility
406 2nd Street
Lynden, WA 98264
(360) 354-2138 FAX (360) 354-1304
<http://www.versacold.com>

VersaCold

Tacoma Facility
1301 26th Ave. East
Tacoma, WA 98424
(253) 620-7250
<http://www.versacold.com>

Belfor, USA, Inc.

(800) 856-3333 – 24-hour Hotline
<http://www.belfor.com>

Belfor, USA – Bend

1117 SE Centennial Street, Suite 110
Bend, OR 97702
(541) 312-2500

Belfor, USA - Coos Bay

1024A South 2nd Street
Coos Bay, OR 97420
(541) 267-3176

Belfor, USA - Medford

449 Pech Road
Central Point, OR 97502
(541) 664-5454

Belfor, USA - Portland

12823 NE Airport Way
Portland, OR 97230
(503) 408-8880

Belfor, USA - Springfield

587 Shelley Street
Springfield, OR 97477
(541) 726-9905

A variety of recovery services, including fire and water recovery, vacuum freeze-drying, dehumidification, and cleaning.

Blackmon-Mooring-Steamatic Catastrophe, Inc. (BMS CAT)

303 Arthur Street
Fort Worth, TX 76107
(800) 433-2940 - 24-hour hotline
Email: info@bmscat.com
<http://www.bmscat.com>

Provides a variety of recovery services for facility and contents, such as vacuum freeze-drying. Regional document recovery centers. Two sublimation freeze dry chambers. BMS CAT has a pre-registration form that helps them respond quickly in an emergency.

Document Reprocessors (West Coast Office)

1384 Rollins Road

Burlingame, CA 94010

(650) 401-7711

FAX (650) 401-8711

(800) 437-9464 - 24-hour Disaster Line

<http://www.documentreprocessors.com>

Provides a variety of drying and restoration services for bound volumes, documents (including architectural records, drawings, and maps), photographs and negatives, audiotape and videotape, microfilm and microfiche, magnetic diskettes and disk drives. Services for bound volumes and documents include “thermoline” vacuum freeze-drying, cryogenic freeze-drying for drying leather-and vellum-bound volumes, surface cleaning and reformatting.

SOLEX Environmental Systems, Inc.

P.O. Box 460242

Houston, TX 77056

(800) 848-0484

FAX (713) 461-5877

(713) 963-8600 (24-hour emergency hotline)

<http://www.solexrobotics.com/ses/emergencyservices/ses.html>

On-site dehumidification and selected other services, including vacuum freeze-drying and cryogenic drying.

FREEZER STORAGE FACILITIES: Check the *Yellow Pages* under “Warehouses – Cold Storage.”

If you cannot dry or treat some materials immediately, particularly books and archival records, blast freezing can be an appropriate stabilization measure in a recovery effort. Some objects that should not be frozen are: paintings, furniture, and magnetic audio or videotapes. Freezing allows time to make recovery decisions and arrests active mold growth. Blast freezing is a quick freezing method that reduces the formation of large ice crystals that can damage materials. An institution should also work with the appropriate conservator to determine which materials need freezing. The International Association of Refrigerated Warehouses publishes the *International Directory of Public Refrigerated Warehouses*, which lists member warehouses by state. The Association’s telephone number is (703) 373-4300. The *Directory* is also available at their website at <http://www.iarw.org/index.asp>

HAZARDOUS MATERIAL: To find an industrial hygienist or environmental consultant, check the *Yellow Pages* under “Lead Removal & Abatement,” “Asbestos Abatement & Removal Service,” “Hazardous Material Control & Removal” and “Environmental & Ecological Services.” For a state-by-state listing of environmental professionals, visit the website for *The Environmental Network* at <http://www.environmentalnetwork.com/index.html>. Areas of expertise include asbestos, environmental consulting and training, lead and certified laboratories.

Arts, Crafts & Theater Safety, Inc. (ACTS)

181 Thompson Street #23
New York, NY 10012-2586
(212) 777-0062
Email: ACTSNYC@cs.com

<http://www.artsandcraftstheatersafety.org>

ACTS staff conducts lectures, workshops, OSHA compliance training sessions and inspections, provides technical assistance for building planning and renovation products and researches and edits safety materials.

Environmental Information Association

6935 Wisconsin Avenue, Suite 306
Chevy Chase, MD 20815-6112
(301) 961-4999 FAX (301) 961-3094
Email: info@eia-usa.org

<http://www.eia-usa.org>

Areas of expertise include asbestos, lead, mold and environmental site assessments.

Environmental Protection Agency (EPA)

Region X
1200 6th Avenue, Suite 900
Seattle, WA 98101
(206) 553-1200
<http://www.epa.gov/aboutepa/states/or.html>

National Institute of Environmental Health Sciences

Office of Communications
P.O. Box 12233, MD K3-16
Research Triangle Park, NC 27709
(919) 541-3345
<http://www.niehs.nih.gov>

Clearinghouse for information on environmental health effects and influences on disease.

National Lead Information Center (Environmental Protection Agency)

422 S Clinton Avenue
Rochester, NY 14620
(800) 424-5323
<http://www.epa.gov/lead>

This EPA division provides information on lead hazards. Sites built prior to 1978 may have used lead-based paints. Objects such as sculptures, stained glass, and ceramics/glazes may also contain lead. Be aware that the soil around a site may also have lead exposure.

US Consumer Product Safety Commission

Western Region Office
1301 Clay Street, Suite 610-N
Oakland, CA 94612-5217
(800) 638-2772 Hotline
(510) 637-4050 FAX (510) 637-4060
<http://www.cpsc.gov>

Call to request information about potential hazards of commercial products.

MICROFILM SALVAGE:**Blackmon-Mooring-Steamatic Catastrophe, Inc. (BMS CAT)**

303 Arthur Street
Fort Worth, TX 76107
(800) 433-2940 – 24-hour Hotline
Email: info@bmscat.com
<http://www.bmscat.com>

Microfilm and microfiche recovery are some of the disaster recovery services BMS CAT provides.

Challenge Industries Microfilm

950 Danby Rd. Suite 179
Ithaca, New York 14850
(607) 272-8990
Email: info@aboutchallenge.org
<http://www.aboutchallenge.org>
<http://e-challenge.biz>

Challenge Industries converts paper documents to high-quality microfilm according to ANSI (American National Standards Institute) standards among others.

Document Reprocessors (West Coast Office)

1384 Rollins Road
Burlingame, CA 94010
(650) 401-7711 FAX (650) 401-8711
(800) 437-9464 – 24-hour Disaster Line
<http://www.documentreprocessors.com>

Surface cleaning, drying, respooling, rehousing, reformatting and digitizing of microfilm, microfiche and X-ray film.

PEST CONTROL: Check the *Yellow Pages* under “Pest Control Services.”

The mission of a good IPM program is to prevent infestation from happening in the first place. Dr. Thomas A. Parker, President and entomologist, Pest Control Services, Inc. in Lansdowne, Pennsylvania recommends choosing a local pest control firm that has been serving the community for 40-50 years. Ideally, the company will have 1 or 2 offices in the community and

employees who have about 15 years experience with that firm. By law pest control companies are only required to have 1 certified technician **in the office**. Choose a company that has certified technicians in the field. Companies that service hospitals are also recommended because they will understand the issues concerning the use of chemicals and bait. For further information, contact the National Pest Management Association at <http://www.pestworld.org/> or (703) 573-8330.

To speak to Dr. Parker about developing an effective IPM program, you can contact him by phone at (610) 444-2277 or by email at bugman22@aol.com.

PHOTOGRAPHS - NEGATIVES:

Chicago Albumen Works

P.O. Box 805

Housatonic, MA 01236

(413) 274-6901

FAX (413) 274-6934

Email: info@albumenworks.com

<http://www.albumenworks.com>

Chicago Albumen Works specializes in the conservation and preservation of 19th and early 20th Century photographic negatives.

Northeast Document Conservation Center (NEDCC)

100 Brickstone Square

Andover, MA 01810-1428

(978) 470-1010 (also for 24-hour emergency assistance)

FAX (978) 475-6021

<http://www.nedcc.org/home.php>

POISON:

Oregon Poison Center

Oregon Health & Science University

3181 SW Sam Jackson Park Road

Portland, OR 97239

(800) 222-1222

<http://www.ohsu.edu/poison>

SECURITY SERVICES: If damage occurs to the building, it may be necessary to hire security services to safeguard the building and collections. Your security company may be able to provide twenty-four hour security guards or advise you on an appropriate service to contact. You can also check the *Yellow Pages* under "Security Guard and Patrol Service."

Security procedures should be reviewed throughout the recovery effort to ensure the safety of the staff and the collections. At a minimum, establish a list of authorized persons to enter the building, and maintain logs for sign in and sign out. If appropriate, provide identification tags, especially for volunteers.

STORAGE: There are several options for storage, including on-site buildings and trailers, as well as off-site self-storage and commercial warehouses. Check the *Yellow Pages* under “Storage,” “Movers and Full Service Storage,” “Buildings – Portable,” “Trailer Renting and Leasing,” “Warehouse – Public-Commercial,” “Warehouses – Cold Storage” and “Warehouses – Mini & Self-Storage.”

THEFT: An emergency response plan should include procedures for theft response. Photographs and objects documentation provide essential information for identifying and recovering stolen materials. Should theft occur, report the loss to local law enforcement and your insurance company who can assist you in identifying places to register your loss. Local law enforcement will be of assistance in contacting Interpol and the National Stolen Art File maintained by the FBI.

Antiquarian Booksellers Association of America (ABAA)

National Office

20 West 44th Street, #507

New York, NY 10036

(212) 944-8291

FAX (212) 944-8293

<http://www.abaa.org>

Maintains an up-to-date searchable “Stolen and Missing Books Database” that is accessible on ABAA’s website. When notifying the Association about a loss, provide a description of the item(s), but withhold some unique information that may be used in the identification process.

Antique Tribal Art Dealers Association, Inc. (ATADA)

Alice Kaufman, Executive Director

(415) 927-3717

Email: acek33@aol.com

<http://www.atada.org/>

ATADA is an association of independent dealers of tribal art. The website reports thefts of tribal objects of clear title only and has a strict policy on what will be posted.

Art Loss Register

Email: info@artloss.com

<http://www.artloss.com>

The Art Loss Register is “the world's largest private international database of lost and stolen art, antiques and collectibles”. The database contains over 100,000 uniquely identifiable items and is searchable by title of piece, date of theft, country of theft and value. In addition, the Art Loss Register contributes to a theft report in four publications.

The Art Loss Register uses the international standard for object descriptions, Object ID. For further information about the Object ID, please contact the International Council of Museums (ICOM), Maison de l’UNESCO, 1 rue Miollis, 75732 Paris cedex 15, France. Email: object-id@icom.museum Website: <http://archives.icom.museum/object-id>

ASIS International

1625 Prince Street
Alexandria, VA 22314-2818
(703) 519-6200 FAX (703) 519-6299
<http://www.asisonline.org>

ASIS International is an international organization of security professionals. On the website you will find “Suggested Guidelines in Museum Security”, developed by its Standing Committee on Museum, Library and Archive Security.

Interpol – Stolen Works of Art

General Secretariat
200, quai Charles de Gaulle
69006 Lyon, France
FAX (33) 4 72 44 71 63
Email: woa@interpol.int
<http://www.interpol.int/Public/WorkOfArt/Default.asp>

The international Criminal Police Organization- Interpol is made up of 188 member countries. Interpol handles stolen works of art cases within its Property Crimes division and maintains a database (accessible to member countries only), as well as a CD-ROM that is available to the public.

Museum Security Network (MSN)

Email: info@museum-security.org
<http://www.museum-security.org>

Links to organizations that track thefts, provide information on protecting collections, etc. The MSN also has an email listserv. Information on joining the MSN listserv is available at: http://groups.google.com/group/museum_security_network.

National Stolen Art File

Federal Bureau of Investigation
Major Theft Unit, Room 3247
935 Pennsylvania Avenue, NW
Washington, DC 20535
(202) 324-4192 FAX (202) 324-1504
<http://www.fbi.gov/hq/cid/arttheft/arttheft.htm>

The National Stolen Art File is a database of stolen art that is reported to the FBI by local law enforcement agencies across the US and around the world. Objects entered into the database must have a value of at least \$2000 and access is limited to local law enforcement agencies that are investigating active cases. Art theft cases reports to the FBI are handled by agents who are assigned cases investigating interstate or international thefts.

The Society of American Archivists (SAA)

17 North State Street, Suite 1425
Chicago, IL 60602-3315
(312) 606-0722 FAX (312) 606-0728
(866) 722-7858
Email: servicecenter@archivists.org
<http://www.archivists.org>

WORLDWIDE RESPONSE AND RECOVERY PROVIDERS: The following corporations provide emergency recovery services worldwide for any size disaster.

Belfor, USA, Inc.

(800) 856-3333 – 24-hour Hotline
<http://www.belfor.com>

Belfor, USA – Bend

1117 SE Centennial Street, Suite 110
Bend, OR 97702
(541) 312-2500

Belfor, USA - Coos Bay

1024A South 2nd Street
Coos Bay, OR 97420
(541) 267-3176

Belfor, USA - Medford

449 Pech Road
Central Point, OR 97502
(541) 664-5454

Belfor, USA - Portland

12823 NE Airport Way
Portland, OR 97230
(503) 408-8880

Belfor, USA - Springfield

587 Shelley Street
Springfield, OR 97477
(541) 726-9905

Belfor, USA is part of the world’s largest disaster restoration company and is the premier provider of property recovery services in North America. Emergency services include first response, fire, water and mold. Belfor offers a free, pre-registration program for emergency response that works out many of the details needed for a highly effective response prior to a loss occurring.

Blackmon-Mooring-Steamatic Catastrophe, Inc. (BMS CAT)

303 Arthur Street
Fort Worth, TX 76107
(800) 433-2940 – 24-hour Hotline
Email: info@bmscat.com
<http://www.bmscat.com>

A variety of recovery services for facilities and contents, including desiccant and refrigerant dehumidification, vacuum freeze-drying, HVAC cleaning and decontamination, and data and media recovery. BMS CAT’s pre-registration service allows them to assist clients before, during and after an emergency and helps expedite the recovery process.

Polygon (formerly Munters MCS)
Headquarters
79 Monroe Street
Amesbury, MA 01913
(800) 422-6379 FAX (978) 241-1274
<http://polygrouponline.com>

Polygon (formerly Munters MCS)
Seattle District Office
301 30th Street NE, Suite 118
Auburn, WA 98002
(800) 422-6379

Polygon (formerly Munters MCS)
Portland District Office
6240 SW Arctic Drive
Beaverton, OR 97005
(503) 693-3111

Polygon is the world leader in humidity control with products and services for water and fire damage restoration, dehumidification, humidification, mold remediation and air-cooling. Recovery services include structural drying, humidity control, document restoration and media preservation, and emergency planning and consulting.

IV. EMERGENCY SUPPLY AND EQUIPMENT VENDORS

In the event of an emergency, it is imperative to have supplies and equipment that will enable an institution to begin its recovery effort as quickly as possible. This section suggests supplies to have on hand and how to locate them. Each institution's needs will be different, depending on the types of emergencies an institution may experience; probability of occurrence; how much damage could be done; the type and size of its collections; and the size of the institution itself. A vulnerability assessment and analysis will help the institution determine the probability of events that could impact the museum and how strong that impact would be (see Appendix A).

During an emergency, materials used for collections recovery do not need to be archival quality. Paper towels and unprinted newsprint would substitute nicely for the more expensive blotter paper. Creative and practical uses of supplies will be necessary for a successful initial salvage effort. Having catalogs from vendors and local hardware stores available will enable you to find substitutes for archival quality materials quickly. Whenever possible, establish a customer account with the vendors who carry supplies you may need. You could also make arrangements for pick up or delivery of supplies and equipment during an emergency as well as payment, so that purchases or rentals can be expedited. An institution may need to develop special procedures in order to authorize the expenditure of funds quickly.

In addition to knowing which vendors will be able to provide the supplies you may need, you may find it useful to establish a network of institutions in your area for sharing supplies and providing support during an emergency.

Once you have gathered your supplies, careful consideration should be given to the storage container(s) used and their location(s). The container(s) and location(s) should be secure but easily accessible during an emergency. Multiple storage areas would be useful if damage to the building prevented you from gaining access to your primary storage location. You may also want to consider including a convenient off-site location. Mobile, waterproof containers should be considered to safeguard supplies from water damage and to assist in transporting supplies. Cooperative arrangements with local institutions for storing supplies may also be a useful option for some back-up supplies.

Label supplies "Emergency Use Only." Maintain and check an inventory list regularly. Supplies that expire, such as camera film, batteries and medicine, should be noted and replaced when necessary. If the containers must be locked, keys to the storage locations should be accessible. We suggest having several copies of the keys made and keeping them in locations that would be accessible to all staff.

The use and location of emergency supplies and equipment should be included in staff emergency response training. Maps showing the storage location for emergency supplies should be given to each employee in addition to being posted in "staff only" areas of the institution.

It is advisable to keep backup records off-site. A good place would be in the trunk of a staff member's car, so that the backup is stored away from the institution at the end of each day but is also handy should you need to refer to it in the event of an emergency. Choose someone who is

in the building on a daily basis and a reliable weekend person as well. Remember to include the emergency plan, a list of current staff and board members with home telephone numbers, the emergency telephone list, building plans, a list of chemicals in the building (including the Material Safety Data Sheets), telephone books and catalogs of vendors.

ADDITIONAL RESOURCE TO AID IN CREATING A CUSTOM SUPPLY LIST FOR YOUR INSTITUTION:

dPlan - The Online Disaster Planning Tool

(NEDCC - Northeast Document Conservation Center)

<http://www.dplan.org>

A free online tool designed to help institutions create a custom disaster plan. The template format allows institutes to input specific data regarding their collections as well as contacts. This tool is especially helpful for small- to medium-sized collections-holding institutions. dPlan was developed by the NEDCC and the Massachusetts Board of Library Commissions. dPlan was launched in 2006 with funding by the Institute of Museum & Library Services (IMLS) and the National Center for Preservation Technology & Training (NCPTT).

Endorsement Statement

The information contained in this resource guide is not exhaustive and inclusion of products, organizations and/or service providers does not imply endorsement by BACC or the Center's Western Region Field Service Office, nor does omission of any supplier indicate censure.

BAGS (plastic): are available from grocery and discount stores. For long term storage needs, inert plastic bags, such as polyethylene and polypropylene, are available from conservation supply companies.

Aurora Plastics & Packaging

2006 196th St. SW Suite 103
Lynnwood, WA 98036
(888) 898-2247
<http://www.auroraplasticbags.com/index.html>

Conservation Resources International LLC

5532 Port Royal Rd
Springfield, VA 22151
(800) 634-6932 FAX (703) 321-0629
Email: sales@conservationresources.com
<http://www.conservationresources.com>

Consolidated Plastics Company, Inc.

4700 Prosper Drive
Stow, OH 44224
(800) 362-1000 FAX (800) 858-5001
<http://www.consolidatedplastics.com>

Gaylord Bros.

P.O. Box 4901
Syracuse, NY 13221-4901
(800) 962-9580 FAX (800) 272-3412
<http://www.gaylord.com>

Hollinger Metal Edge

Archival Storage Materials
6340 Bandini Blvd.
Commerce, CA 90040
(800) 862-2228 FAX (888) 822-6937
Email: info@hollingermetaledge.com
<http://www.hollingermetaledge.com>

University Products, Inc.

517 Main Street
Holyoke, MA 01040
(800) 628-1912 FAX (800) 532-9281
Email: info@universityproducts.com
<http://www.universityproducts.com>

BLOTTING PAPER: is available from art supply stores and conservation supply companies. Less expensive, unmarked newsprint can be used instead of blotting paper in an emergency. If blotting paper is used, make sure that it does not contain any dyes. Blotting paper (as well as paper towels and blank newsprint) can be used to interleave between papers and book pages.

Archivart

40 Eisenhower Drive
Paramus, NJ 07652
(800) 804-8428
<http://www.archivart.com>

Conservation Resources International LLC

5532 Port Royal Rd
Springfield, VA 22151
(800) 634-6932 FAX (703) 321-0629
Email: sales@conservationresources.com
<http://www.conservationresources.com>

Gaylord Bros.

P.O. Box 4901
Syracuse, NY 13221-4901
(800) 962-9580 FAX (800) 272-3412
<http://www.gaylord.com>

Talas

330 Morgan Avenue
Brooklyn, NY 11211
(212) 219-0770 FAX (212) 219-0735
<http://talasonline.com>

University Products, Inc.

517 Main Street
Holyoke, MA 01040
(800) 628-1912 FAX (800) 532-9281
Email: info@universityproducts.com
<http://www.universityproducts.com>

BOXES (corrugated cardboard): can be purchased from moving companies. Check the *Yellow Pages* under “Boxes – Corrugated & Fiber” and “Moving Supplies.”

BOXES (plastic):

Consolidated Plastics Company, Inc.

4700 Prosper Drive
Stow, OH 44224
(800) 362-1000
<http://www.consolidatedplastics.com>

Gaylord Bros.

P.O. Box 4901
Syracuse, NY 13221-4901
(800) 962-9580 FAX (800) 272-3412
<http://www.gaylord.com>

RESCUBE[®] (collapsible polyethylene boxes for transport of water-damaged materials).

Hollinger Metal Edge

Archival Storage Materials
6340 Bandini Blvd.
Commerce, CA 90040
(800) 862-2228 FAX (888) 822-6937
Email: info@hollingermetaledge.com
<http://www.hollingermetaledge.com>

RESCUBE[®] (collapsible polyethylene boxes for transport of water-damaged materials).

PROTEXT, Inc.

PO Box 864
Greenfield, MA 01302
(301) 320-7231 FAX (301) 320-7232
Email: ProText@protext.net
<http://www.protext.net>

RESCUBE[®] (collapsible polyethylene boxes for transport of water-damaged materials).

University Products, Inc.

517 Main Street
Holyoke, MA 01040

(800) 628-1912 FAX (800) 532-9281

Email: info@universityproducts.com

<http://www.universityproducts.com>

RESCUBE[®] (collapsible polyethylene boxes for transport of water-damaged materials), storage/tote baskets, collapsible polypropylene boxes.

BRUSHES (soft): are available from hardware, paint and art supply stores.

Gaylord Bros.

P.O. Box 4901
Syracuse NY 13221

(800) 962-9580 FAX (800) 272-3412

<http://www.gaylord.com>

Peregrine Brushes and Tools

PO Box 3465

Logan, UT 84323

(267) 888-6657 FAX (888) 693-0170

www.brushesandtools.com

Talas

330 Morgan Avenue
Brooklyn, NY 11211

(212) 219-0770 FAX (212) 219-0735

<http://talasonline.com>

University Products, Inc.

517 Main Street
Holyoke, MA 01040

(800) 628-1912 FAX (800) 532-9281

Email: info@universityproducts.com

<http://www.universityproducts.com>

CHEMICAL LIGHTSTICKS: are often available in camping, hardware and discount stores, but availability may be seasonal. You can also search the web for Army/Navy surplus stores, as well as survival and outdoor outfitters. If stored in a cool, dry environment, lightsticks last approximately four years.

Chemical lightsticks are a source of light when there is no electricity. They are non-toxic. There are long-duration and high-density illumination lightsticks. Long duration lightsticks remain effective for eight to twelve hours, while the high-intensity lightsticks provide light for approximately seventy-five minutes. Green and yellow are the best colors for emergencies because they provide the brightest light. Avoid the novelty lightsticks as they provide light for only a very short time.

Preparedness Industries Inc.

1935 Airport Blvd.
Red Bluff, CA 96080

(530) 736-4119

Email: preparedness@worldlyhelp.com

<http://www.preparedness.com/chemlig.html>

5-minute ultra-high intensity; 30-minute high-intensity; and 8- and 12-hour lightsticks.

DEHUMIDIFIERS - RENTAL: Check the *Yellow Pages* under “Tools-Renting” or “Air Purifying and Cleaning Equipment and Services”.

DISINFECTANTS: Common household products for cleaning shelving and office furniture (not collection items) can be purchased at grocery, hardware and discount stores. An economical product is bleach used in a 10% solution with water. **Disinfectants should not be used directly on collection materials.**

DISPOSABLE CAMERAS: are an effective way to make photographic records of damage.

DISTILLED WATER: can be purchased in one-gallon containers in grocery stores. Distilled water is recommended for rinsing photographs. Check the *Yellow Pages* under “Water Companies-Bottled Bulk, Etc.” and “Water Filtration & Purification Equipment – Consumer.”

ENVIRONMENTAL MONITORS: Monitoring the temperature and relative humidity is critical after an emergency to assist in identifying inadequate environmental conditions that need to be remedied immediately. High relative humidity and wet objects can initiate and sustain mold growth. In very wet situations, recovery response within twenty-four hours is essential.

Select a monitor, such as a data logger or recording hygrothermograph that can provide immediate, continuous recording of the temperature and relative humidity. These inexpensive monitors are useful for spot-checking conditions on shelving units and behind furniture. A search for “data loggers” on any search engine will provide a number of companies in addition to the following:

The Data Logger Store
(877) 766-5412
www.dataloggerstore.com

Dickson Instruments Company
930 South Westwood Avenue
Addison, IL 60101
(800) 757-3747 FAX (800) 676-0498
<http://www.dicksondata.com>

Fisher Scientific Company
2000 Park Lane
Pittsburgh, PA 15275-1166
(800) 766-7000 FAX (800) 926-1166
<http://www.fishersci.com>

Gaylord Bros.
P.O. Box 4901
Syracuse, NY 13221-4901
(800) 962-9580 FAX (800) 272-3412
<http://www.gaylord.com>

Image Permanence Institute (IPI)
Rochester Institute of Technology/IPI
70 Lomb Memorial Drive
Rochester, NY 14623
(585) 475-5199 FAX (585) 475-7230
<http://www.imagepermanenceinstitute.org>

Onset Corp.
PO Box 3450
Pocasset, MA 02559-3450
(800) 564-4377 FAX (508) 759-9100
Email: sales@onsetcomp.com
<http://www.onsetcomp.com>

Robert E. White Instruments, Inc.
PO Box 775
Medfield, MA 02052
(800) 992-3045 FAX (617) 482-8304
<http://www.robertwhite.com>

Talas
330 Morgan Avenue
Brooklyn, NY 11211
(212) 219-0770 FAX (212) 219-0735
<http://talasonline.com>

FANS: can be purchased at hardware and discount stores. Some rental services have fans. To discourage mold growth, low-volume fans should be used with dehumidifiers to increase air circulation.

FENCING: Check the *Yellow Pages* under “Fence.” Some rental services have fencing.

FIRST-AID KITS: can be purchased at camping supply stores, safety equipment companies and pharmacies. The safety of staff must be considered during the recovery effort. A sufficient number of kits should be available - approximately one small kit per ten to twelve persons. The kit should indicate the number of people it serves.

FISHING LINE: (monofilament) can be purchased at hardware, sporting goods and discount stores.

FLASHLIGHTS: can be purchased at hardware, sporting goods and discount stores. Pelican Products carries flashlights that are brighter than any other brand. They offer a variety of designs from small to large, even hands free. Pelican® MityLites® Penlight Flashlights are made of unbreakable, high-impact polycarbonate resin. They are 400% brighter than ordinary pocket lights and are water resistant. They are distributed by Quickpro Gear, and can be found online at <http://www.pelicanproducts.us/cataspx10.html>.

FREEZER PAPER: can be purchased at grocery stores. When preparing books for freeze-drying, use the freezer paper as a wrapper to prevent books from sticking together. Freezer paper is not suitable for interleaving between pages (for air-drying purposes) because it slows down the drying process.

GENERAL EMERGENCY SUPPLIES: The following vendor specializes in providing emergency supplies for historic and cultural collections.

PROTEXT, Inc.

PO Box 864

Greenfield, MA 01302

(301) 320-7231

FAX (301) 320-7232

Email: ProText@protext.net

<http://www.protext.net>

Provides a variety of emergency recovery supplies including “RESCUBES” (collapsible polyethylene boxes for transport of water-damaged materials), and “REACT.PAK” (first-aid kit for water-damaged books), emergency water diverters for leaks, and instructions for planning and salvage procedures. “RESCUBES” and the “REACT.PAK” can also be purchased from Gaylord Bros. and University Products. Addresses are listed in this section under “Boxes (plastic)”.

GENERATOR RENTAL: Contact the rental company ahead of time so they can visit your institution and determine your electrical load needs and hook-up requirements. Check the *Yellow Pages* under “Tools-Renting”.

GLOVES: are available from hardware and discount stores. Safety and equipment companies have a variety of gloves that can be purchased in bulk. These companies are listed in this section under the heading “Safety Supplies and Equipment.”

HOSES: are available from hardware and discount stores. An adjustable nozzle helps to control water pressure, especially when cleaning delicate objects.

NEWSPRINT: Unprinted newsprint may be purchased at paper dealers, art supply stores and moving companies, such as U-Haul and Ryder. Roll ends are often available from local newspaper printers for a minimal charge.

PACKING SUPPLIES: A variety of packing tapes, labels, scissors and cushioning material can be purchased from local hardware and discount stores, office supply stores and moving companies.

Bags & Bows (formerly Veripack)
(800) 225-8155
Email: customerservice@bagsandbowsonline.com
<http://www.bagsandbowsonline.com>

Consolidated Plastics Company, Inc.
4700 Prosper Drive
Stow, OH 44224
(800) 362-1000 FAX (800) 858-5001
<http://www.consolidatedplastics.com>

FP International
6195 East Randolph Street
Commerce, CA 90040-3515
(323) 722-5112 FAX (323) 722-4934
<http://www.fpintl.com>

FP International
1050 Broadway
Redwood City, CA 94063
(800) 888-9946 FAX (650) 366-0248
<http://www.fpintl.com>

Also CUSHION-LITE® Polyethylene Foam and CUSHION-Air® Polyethylene bubble cushioning

Manufactures *Cell-O*® air cushions, NOVUS® Packaging Systems

Uline
2950 Jurupa Street
Ontario, CA 91761
(800) 958-5463
Email: customer.service@uline.com
<http://www.uline.com>

PALLETS: Check the *Yellow Pages* under “Pallets and Skids.”

Global Industrial
(888) 978-7759
<http://www.globalindustrial.com>

One Way Solutions

550 Frontage Road
Northfield, IL 60093
(847) 446-0872

Email: info@oneway-solutions.com

<http://www.oneway-solutions.com>

Plastic pallets of various sizes and load-bearing weights.

PEST AND INSECT TRAPS: can be purchased from hardware stores and many of the conservation supplies vendors.

Atlantic Paste & Glue - CatchMaster

170 53rd Street
Brooklyn, NY 11232
(800) 458-7454

FAX (718) 439-0039

Email: info@catchmasterpro.com

<http://www.catchmasterpro.com>

Professional insect and roach products including sticky traps for insect monitoring.

Gaylord Bros.

P.O. Box 4901
Syracuse, NY 13221-4901
(800) 962-9580

FAX (800) 272-3412

<http://www.gaylord.com>

Museum Pest Monitoring Kit and Pest Trap Kit that contain a variety of traps and lures.

Insects Limited, Inc.

16950 Westfield Park Road
Westfield, IN 46074-9374
(317) 896-9300

FAX (317) 867-5757

<http://www.insectslimited.com>

Products include pest and insect detectors and traps, pheromone lures and pest monitoring management software.

University Products, Inc.

517 Main Street
Holyoke, MA 01040
(800) 628-1912

FAX (800) 532-9281

Email: info@universityproducts.com

<http://www.universityproducts.com>

University Products Inc. offers a variety of insect detectors and pheromone lures for cigarette beetles, cockroaches and webbing clothes moths.

PLASTIC SHEETING: can be purchased at hardware and discount stores. Any plastic sheeting can be used during an emergency. Clear plastic sheeting allows one to see what is being covered. Vinyl sheeting should be avoided for long-term storage. Inert plastic sheeting, such as Mylar or Melinix 516, is best for long-term storage of collections.

Home Depot carries Film-Gard, 6-mil polyethylene construction sheeting sold in rolls measuring 10 ft. by 100 ft. (Model B0610) This is an excellent product to use to cover cases, boxes and displays to protect against dust and water damage. This can be available at some hardware stores and construction supply centers.

RADIOS: Battery-operated radios and two-way radios are available from local electronic companies. Check the *Yellow Pages* under “Radio Communication Equipment & Systems.”

RESPIRATORS: For health and safety reasons, the use of a respirator is required in some recovery situations, such as mold outbreaks. Proper selection, fit, use, maintenance and storage of a respirator should be discussed with the vendor. The National Institute for Occupational Safety and Health (NIOSH) must approve all respirators. Staff must be trained in the use of a respirator and there should be **one respirator for each staff member**. For suppliers of respirators, see the listings below for “Safety Supplies and Equipment.” Safety suppliers will be able to help you determine your needs and fit you for the proper respirator. The US Department of Labor’s Occupational Safety & Health (OSHA) department has created a “Respiratory Protection E-Tool” that will help you select an appropriate respirator, as well as aid in developing a change schedule for the cartridge. You can find the OSHA eTool at <http://www.osha.gov/SLTC/etools/respiratory/index.html>.

SAFETY SUPPLIES AND EQUIPMENT: Some safety supplies and equipment can be purchased at hardware stores. Catalogs can be obtained from the safety equipment vendors listed. Having catalogs on hand will help staff to expedite the selection, ordering and delivery of needed supplies and equipment.

Staff should be aware of the health and safety precautions and legal requirements that should be observed when entering areas that have suffered damage. The first consideration in any recovery effort should be the safety of the staff. Some of the health and safety considerations are: structural and electrical hazards; fire; blocked exit and escape routes; chemical and biological hazards (mold, lead, asbestos, contaminated water, toxic chemicals); dangerous collection materials (pesticide treatments, mercury, arsenic, formaldehyde); indoor air quality; and staff fatigue.

Staff must be trained in the use of the safety equipment and supplies. Material Safety Data Sheets (MSDS) must be available at the time of an emergency for the chemicals that are stored on-site. Employers must be aware of fire codes, in addition to regulations mandated by the Occupational Safety and Health Administration (OSHA) and the Environmental Protection Agency (EPA).

Examples of safety supplies and equipment are respirators, gloves, first-aid kits, safety eyewear, chemical-spill absorbing materials, emergency lighting, protective clothing and signage.

Airgas Safety Products

Airgas Nor Pac
3632 NE Columbia Blvd.
Portland, OR 97211
(503) 288-2527 FAX (503) 288-4627
<http://www.airgas.com>

Cole-Parmer Instrument Company

625 E. Bunker Court
Vernon Hills, IL 60061
(800) 323-4340 FAX (847) 247-2929
Email: info@coleparmer.com
<http://www.coleparmer.com>

Global Industrial

(888) 978-7759
<http://www.globalindustrial.com>

Hagemeyer North America

(877) 462-7070
<http://www.hagemeyerna.com>

Industrial Safety Supply Corp.

P.O. Box 8686
Emeryville, CA 94662
(510) 658-0414 FAX (510) 658-0413
Email: customerservice@issc.com
<http://www.issc.com>

Lab Safety Supply

P.O. Box 1368
Janesville, WI 53547-1368
(800) 356-0783 FAX (800) 543-9910
Email: custsvc@labsafety.com
<http://www.labsafety.com>

Masune™ First Aid and Safety

500 Fillmore Avenue
Tonawanda, NY 14150
(800) 831-0894 FAX (800) 222-1934
Email: customersupport@masune.com
<http://www.masune.com>

Mallory Safety

1040 Industrial Way
PO Box 2068
Longview, WA 98632
(360) 636-5750
<http://www.malloryco.com>

New Pig Corporation

One Pork Avenue
Tipton, PA 16684-0304
(800) 468-4647 FAX (800) 621-7447
Email: hothogs@newpig.com
<http://www.newpig.com>

Red-D-Arc, Inc.

11020 E. Marginal Way S.
Tukwila, WA 98168
(206) 763-2072 FAX (206) 763-2645
<http://www.red-d-arc.com>

SIGNAGE: Tapes and signs with various messages for alerting people about hazardous conditions and locations for emergency equipment (caution, asbestos, biohazard, emergency exit, fire extinguisher and first aid kit) can be purchased at hardware and lab safety stores. For lab safety suppliers, see the listing above for “Safety Supplies and Equipment.”

TENT RENTAL: Check the *Yellow Pages* under “Tents-Renting.”

TOILET RENTAL: Check the *Yellow Pages* under “Toilets-Portable.”

TOOL RENTAL: Check the *Yellow Pages* under “Tools-Renting.”

VACUUM CLEANERS: When cleaning up mold, soot and fine particulates, it is essential that the vacuum be equipped with a HEPA (high efficiency particulate air) filter or that the exhaust is vented outdoors or into a fume hood. For tips on what to look for in a museum vacuum, read the National Park Service's Conserve-O-Gram, "Choosing a Museum Vacuum Cleaner" at <http://www.nps.gov/museum/publications/conserveogram/01-06.pdf>.

Other points to keep in mind when vacuuming collections objects: Change the bag or empty the canister as soon as you are finished using the vacuum. To prevent vacuuming up pieces of objects that you don't want to lose, cover the end of the attachment with cheesecloth or pantyhose.

Gaylord Bros.

P.O. Box 4901
Syracuse, NY 13221-4901
(800) 962-9580 FAX (800) 272-3412
<http://www.gaylord.com>

Nilfisk-Advance America Inc. Headquarters

740 Hemlock Road, Suite 100
Morgantown, PA 19543
(800) 645-3475 FAX (610) 647-6427
Email: questions@nilfisk.com
<http://www.nilfiskcfm.com>

University Products, Inc.

517 Main Street
Holyoke, MA 01040
(800) 628-1912 FAX (800) 532-9281
Email: info@universityproducts.com
<http://www.universityproducts.com>

WATER-SENSING ALARMS:

Dorlen Products Inc.

6615 W. Layton Avenue
Milwaukee, WI 53220
(414) 282-4840 FAX (414) 282-5670
Email: dorlen@execpc.com
<http://www.waternalert.com>

Manufactures three lines of water-sensing equipment: Water Alert[®], Water Alert Sensor Cable[®] and Ceiling Guard[®] Water Leakage Sensing system.

Gaylord Bros.

P.O. Box 4901
Syracuse, NY 13221-4901
(800) 962-9580 FAX (800) 272-3412
<http://www.gaylord.com>

Preservation Resource Group

P.O. Box 1768
Rockville, MD 20849-1768
(800) 774-7891 FAX (301) 279-7885
<http://www.prginc.com>

Sonin Water Sensor - SONIN, Inc.

15105-D John J. Delaney Drive, Suite 333
Charlotte, NC 28277
(800) 223-7511 FAX (800) 690-7511
<http://www.sonin.com>

Manufactures the Sonin Water Alarm with Remote Sensor and the Wireless Water Alarm, as well as moisture meters. Call to find a local distributor or purchase online from www.amazon.com.

Stevens Water Monitoring Systems

12067 NE Glenn Widing Drive, Suite 106
Portland, OR 97220
(800) 452-5272 FAX (503) 445-8001
Email: info@stevenswater.com
<http://stevenswater.com>

Tyco Thermal Controls

307 Constitution Drive
Menlo Park, CA 94025
(800) 545-6258
<http://www.tycothermal.com>
TraceTek Leak Detection and Location Systems

WATERPROOF CLOTHING: is available from sporting supply and discount stores, and safety equipment companies.

WET/DRY VACUUM CLEANERS: are available for rent from grocery stores, hardware stores and equipment rental stores. Some of the companies who rent tools also rent vacuum cleaners. Check the *Yellow Pages* under “Tools-Renting.”

V. CONSERVATORS

Developing a working relationship with a conservator should be part of your emergency planning preparations. It will be easier for the conservator to implement recovery procedures if s/he is familiar with your collection before an emergency. A conservator can also assist in reviewing the salvage procedures in your Emergency Plan.

Because of the highly technical skills, conservators tend to specialize in a particular type of object, such as works of art on paper, sculpture, ethnographic materials, decorative materials, textiles, paintings, photographs, furniture or books. The qualifications and references of a conservator should be investigated to aid in proper selection. If you need assistance in identifying an appropriate conservator for your collection, the national, regional and local organizations listed below can help locate an appropriate conservator.

The American Institute for Conservation of Historic and Artistic Works (AIC) provides a useful brochure, *How to Select a Conservator*. This brochure discusses the conservation profession, points to consider when selecting a conservator, such as training, experience, specialization and references, and outlines what to expect when working with a conservator. The brochure is available online at <http://www.conservation-us.org>, click on *How to Select a Conservator*.

NATIONAL RESOURCES

The American Institute for Conservation of Historic and Artistic Works (AIC)

1156 15th St. NW, Suite 320

Washington, DC 20005-1714

(202) 452-9545

FAX (202) 452-9328

Email: info@conservation-us.org

<http://www.conservation-us.org>

A list of conservators in your region can be found in AIC's *Guide to Conservation Services*. Copies of the brochure *How to Select a Conservator* and *AIC Code of Ethics and Standards of Practice* can be obtained from the AIC office.

The *Guide to Conservation Services*, an educational public service of the American Institute for Conservation of Historic and Artistic Works (AIC), is a list of conservation professionals available to help meet your conservation needs. A computerized list is generated based on the nature of the object(s), the service(s) being sought, and the relevant geographic area. The conservators on the list are members of the American Institute for Conservation of Historic and Artistic Works (AIC), the national membership organization for conservation professionals.

The Best Way to Choose a Conservator is To Ask Questions!

AIC has three membership categories that are intended to reflect varying levels of experience, professionalism and professional recognition, although exact differentiations are not possible:

FELLOWS have been recognized by a panel of conservation professionals as having at least seven years conservation experience, competency in the profession, adhering to the *AIC Code of Ethics and Guidelines for Practice* and advancing the field of conservation.

PROFESSIONAL ASSOCIATES have also been recognized by a panel of conservation professionals and have at least five years involvement in conservation, including their training period. They also have agreed to abide by the *AIC Code of Ethics and Guidelines for Practice*.

ASSOCIATES may be practitioners or others (e.g., art historians, curators, librarians, interested in preservation). Those who are practicing conservators have agreed to abide by the *AIC Code of Ethics and Guidelines for Practice*.

Inclusion of a conservator's name on a list does not imply professional endorsement by the AIC. The list may include conservation professionals with a broad range of training, experience and specialization. Because the list is created from information provided by individual AIC members and has not been further verified, use care in selecting a conservator. Inclusion on the referral list is open to individual AIC members. There are currently no universally recognized standards (like a bar exam for lawyers) by which conservation professionals are measured.

REGIONAL CONSERVATION CENTERS AND PRESERVATION PROGRAMS

Regional Alliance for Preservation (RAP)

<http://www.rap-arcc.org>

RAP is a cooperative of the Preservation Field Service Programs that are funded by the NEH. RAP is made up of 13 member organizations that provide cultural institutions with training and education to help with care of their collections. RAP maintains a website with links to each of its affiliated preservation service programs and regional conservation centers located throughout the country. These regional centers provide information, emergency assistance, consultations and conservation treatment. A listing of the 13 RAP members can be found on the following three pages:

Western / Pacific Members

Balboa Art Conservation Center

P.O. Box 3755

San Diego, CA 92163-3755

(619) 236-9702 FAX (619) 236-0141

Email: info@bacc.org

<http://www.bacc.org>

Contact: Janet Ruggles, Director

Services: Paintings, polychrome sculpture, paper, photography, and frame conservation. Analytical services. Surveys, consultations, and emergency assistance. Workshops, project design and development, and grant writing assistance.

Gulf Coast / Southern US Members

Amigos Library Services, Inc.

14400 Midway Road

Dallas, TX 75244-3509

(800) 843-8482 FAX (972) 991-6061

Email: amigos@amigos.org

<http://www.amigos.org>

Contact: Gina Minks, Imaging and Preservation Service Manager

Services: Disaster preparedness and recovery assistance, site survey consultations, digitization training, metadata training, project planning, preservation training, and specialized consultation services.

WESTPAS- Western States & Territories Preservation Assistance Service

**Services for library & archives only*

(888) 905-7737- Emergency

Email: info@westpas.org

<http://westpas.org>

Contact: Julie Page, WESTPAS Service Coordinator

Services: Education and training in emergency planning and response for library and archive collections.

LYRISIS

1438 W Peachtree Street NW, Suite 200

Atlanta, GA 30309-2955

(800) 999-8558 FAX (404) 892-7879

Email: alicia.riley@lyrasis.org

<http://www.lyrasis.org>

Contact: Alicia Riley, Digital and Preservation Services Administrative Coordinator

Services: Education & training, site surveys, consultations, digital imaging and emergency response services.

RAP members continue on next page...

Midwest Members

The Gerald R. Ford Conservation Center

1326 South 32nd Street

Omaha, NE 68105

(402) 595-1180 FAX (402) 595-1178

Email: deborah.long@nebraska.gov

<http://www.nebraskahistory.org/fordcenter>

Contact: Deborah Long, Senior Objects Conservator

Services: Objects, paper, textiles, photographs, books, frames, archaeology, and sculpture conservation. Digital imaging services, consultations, surveys, education & training.

Intermuseum Conservation Association

2915 Detroit Avenue

Cleveland, OH 44113

(216) 658-8700 FAX (216) 658-8709

Email: info@ica-artconservation.org

<http://www.ica-artconservation.org>

Contact: Albert Albano, Executive Director
Services: Paintings, paper, photographs, books, objects, textiles, architectural elements, and frame conservation. Analytical services, fine art storage, surveys and consultations, disaster planning and mitigation assistance, and grant collaboration.

Midwest Art Conservation Center

2400 3rd Avenue South

Minneapolis, MN 55404

(612) 870-3120 FAX (612) 870-3118

Email: info@preserveart.org

<http://www.preserveart.org>

Contact: Colin Turner, Executive Director

Services: Paintings, paper, objects, and textiles conservation. Analytical services. Surveys, education and training, emergency response planning and 24-hour emergency disaster response, grant writing assistance.

RAP members continue on next page...

Eastern Seaboard Members

Conservation Center for Art and Historic Artifacts (CCAHA)

264 South 23rd Street
Philadelphia, PA 19103
(215) 545-0613 FAX (215) 735-9313
Email: ccaaha@ccaaha.org
<http://www.ccaaha.org>
Contact: Laura Hartz Stanton, Director of Preservation Services
Services: Books, paper, parchment, and photograph conservation. Digital Imaging/Photo duplication. Consultations, surveys, disaster assistance, training & education.

National Park Service Museum Conservation Services Harpers Ferry Center

P.O. Box 50
Harpers Ferry, WV 25425
(304) 535-6142 FAX (304) 535-6055
<http://www.nps.gov/hfc/conservation>
*Services: For NPS Sites and collections only. Paper, Textiles, Objects/Ethnographic, and wooden artifacts conservation. Analytical services.

Pebbles Island Resource Center, Bureau of Historic Sites, New York

*Services for New York State Collections only.
<http://www.nysparks.com>
Website has links to the National Register site with Technical Preservation Briefs for historic structures.

Library of Congress Preservation Directorate

101 Independence Avenue, SE
Washington, DC 20540-4530
(202) 707-8345 FAX (202) 707-1525
Email: moey@loc.gov
<http://www.loc.gov/preserv>
Contact: Mary Oey, Preservation Education Specialist
Services: Education and outreach.

Northeast Document Conservation Center (NEDCC)

100 Brickstone Square
Andover, MA 01810
(978) 470-1010 – 24-hour Emergency
FAX (978) 475-6021
<http://www.nedcc.org>
Contact: Bill Veillette, Executive Director
Services: Books, paper, and photograph conservation. Digitization and reformatting services. Training, surveys, consulting and 24-hour disaster assistance.

The Textile Conservation Workshop

3 Main Street
South Salem, NY 10590
(914) 763-5805 FAX (914) 763-5549
Email: textile@bestweb.net
<http://www.textileconservationworkshop.org>
Contact: Patsy Orlofsky, Director
Services: Textiles conservation. Consultation services, education & training.

VI. SPECIAL CIRCUMSTANCE: MOLD RECOVERY

This is a selected list of companies that provide supplies and equipment that may be needed when recovering from a mold outbreak (see Appendix C for a list of recommended supplies). Service providers for mold recovery are included in Section III: Emergency Response Service Providers, under the headings Dehumidification, Freeze-Drying, Freezer Storage Facilities and Hazardous Materials.

Because there are species of toxic mold, it is advisable to consult a mycologist or industrial hygienist prior to mold cleanup to determine health risks. A Conservator should be contacted before establishing any cleaning procedures for collections materials.

Safety Precautions

Because mold enters the body by inhalation, through breaks in the skin and even the eyes, the proper precautions must be made when dealing with a mold outbreak to ensure the health and safety of those who will be cleaning up the mold.

In some cases, certain molds can cause very serious illnesses in those who are susceptible. Extreme care needs to be taken when determining who can be exposed to mold-affected areas and materials. Respiratory problems, skin and eye irritations, and infections can occur even if one is exposed to mold that is not highly toxic. Regardless of the species of mold present, individuals with allergies, diabetes, asthma, respiratory problems or compromised immune systems, as well as those taking steroid therapy, should avoid the affected area(s) and materials.

To find a mycologist who can identify the species of mold, contact your local hospital, university or commercial testing lab that specializes in mold identification. They will provide the sampling procedures to follow. Companies that provide mold identification services may also be found in the *Yellow Pages* under headings such as “Environmental, Conservation and Ecological Associations,” “Lead Substance Removal and Abatement Service” or “Asbestos Removal and Abatement Service.” On the web, go to <http://www.fungi.sav.sk/myco> to find a mycologist in your area. Mold test kits are also available online from a variety of vendors. One company that specializes in environmental control including mold test kits is: Dust Free, Inc.: <http://dustfree.com>.

SOURCES OF SUPPLIES AND EQUIPMENT

Some mold recovery supplies and equipment should be on hand, or be easily available at local stores. Having catalogs on hand ahead of time will be useful in helping staff to quickly select and order the needed supplies and equipment. Remember that some of the supplies will be needed in bulk.

Endorsement Statement

The information contained in this resource guide is not exhaustive and inclusion of products, organizations and/or service providers does not imply endorsement by BACC or the Center’s Western Region Field Service Office, nor does omission of any supplier indicate censure.

BRUSHES (soft): are available from hardware, paint and art supply stores, and from these vendors:

Gaylord Bros.

P.O. Box 4901
Syracuse NY 13221
(800) 962-9580 FAX (800) 272-3412
<http://www.gaylord.com>

Peregrine Brushes and Tools

PO Box 3465
Logan, UT 84323
(267) 888-6657 FAX (888) 693-0170
www.brushesandtools.com

Talas

330 Morgan Avenue
Brooklyn, NY 11211
(212) 219-0770 FAX (212) 219-0735
<http://talasonline.com>

University Products, Inc.

517 Main Street
Holyoke, MA 01040
(800) 628-1912 FAX (800) 532-9281
Email: info@universityproducts.com
<http://www.universityproducts.com>

DEHUMIDIFIERS-RENTAL: Check the *Yellow Pages* under “Humidifying Apparatus” and “Tools-Renting” to find industrial or high capacity dehumidifiers.

DISINFECTANTS: Common household products for cleaning shelving and office furniture (not collection items) can be purchased at grocery, hardware and discount stores. An economical product is bleach diluted to 10% with water. **Disinfectants should not be used directly on collection materials.**

ENVIRONMENTAL MONITORS: Monitoring the temperature and relative humidity is critical after an emergency so that dangerous environmental conditions may be remedied immediately. High relative humidity and wet objects can initiate and sustain mold growth. In very wet situations, recovery response within twenty-four hours is essential.

Select a monitor, such as a data logger or recording hygrothermograph that can provide immediate, continuous recording of the temperature and relative humidity. These inexpensive monitors are useful for spot-checking conditions on shelving units and behind furniture. A search for “data loggers” on any search engine will provide a number of companies in addition to the following:

The Data Logger Store

(877) 766-5412
www.dataloggerstore.com

Dickson Instruments Company

930 South Westwood Avenue
Addison, IL 60101
(800) 757-3747 FAX (800) 676-0498
<http://www.dicksondata.com>

Fisher Scientific Company

2000 Park Lane
Pittsburgh, PA 15275-1166
(800) 766-7000 FAX (800) 926-1166
<http://www.fishersci.com>

Gaylord Bros.

P.O. Box 4901
Syracuse, NY 13221-4901
(800) 962-9580 FAX (800) 272-3412
<http://www.gaylord.com>

Image Permanence Institute (IPI)
Rochester Institute of Technology/IPI
70 Lomb Memorial Drive
Rochester, NY 14623
(585) 475-5199 FAX (585) 475-7230
<http://www.imagepermanenceinstitute.org>

Robert E. White Instruments, Inc.
PO Box 775
Medfield, MA 02052
(800) 992-3045 FAX (617) 482-8304
<http://www.robertwhite.com>

Thomas Scientific
P.O. Box 99
Swedesboro, NJ 08085
(856) 467-2000
<http://www.thomassci.com>

Onset Corp.
PO Box 3450
Pocasset, MA 02559-3450
(800) 564-4377 FAX (508) 759-9100
Email: sales@onsetcomp.com
<http://www.onsetcomp.com>

Talas
330 Morgan Avenue
Brooklyn, NY 11211
(212) 219-0770 FAX (212) 219-0735
<http://talasonline.com>

University Products
517 Main Street
Holyoke, MA 01040
(800) 628-1912 FAX (800) 532-9281
Email: info@universityproducts.com
<http://www.universityproducts.com>

FANS: can be purchased at hardware and discount stores. Check the *Yellow Pages* under “Fans-Household.” Some rental services have fans. When using fans to dry out a room, fans should be kept on low and directed away from collections materials.

GENERAL EMERGENCY SUPPLIES

Gaylord Bros.
P.O. Box 4901
Syracuse, NY 13221-4901
(800) 962-9580 FAX (800) 272-3412
<http://www.gaylord.com>

PROTEXT, Inc.
PO Box 864
Greenfield, MA 01302
(301) 320-7231 FAX (301) 320-7232
Email: ProText@protext.net
<http://www.protext.net>

University Products, Inc.
517 Main Street
Holyoke, MA 01040
(800) 628-1912 FAX (800) 532-9281
Email: info@universityproducts.com
<http://www.universityproducts.com>

GLOVES: Protective gloves are a necessary precaution and are available from hardware and discount stores. Safety and equipment companies have a variety of gloves, which can be purchased in bulk. These companies are listed in this section under the heading “Safety Supplies and Equipment.”

MAGNIFYING GLASS: may help in discerning if an observed problem is actually mold rather than dirt. Dust, stains, or cobwebs are sometimes mistaken for mold. Inexpensive magnifying glasses can be purchased at discount and jeweler's supply stores.

RESPIRATORS: When cleaning mold, it is mandatory to wear a respirator with a HEPA (high efficiency particulate air) filter, **NOT a dust mask**. Proper selection, fit, use, maintenance and storage of a respirator should be discussed with the vendor. For suppliers of respirators, see the listing in this section for "Safety Supplies and Equipment."

SAFETY SUPPLIES AND EQUIPMENT: Some safety supplies and equipment can be purchased at hardware stores. Catalogs can be obtained from the safety equipment vendors listed. Having catalogs on hand will help staff expedite the selection, ordering, and delivery of needed supplies and equipment. Some equipment vendors provide express delivery of supplies and equipment. Safety supplies and equipment such as respirators, gloves, first-aid kits, protective eyewear, emergency lighting, clothing, and signage may be obtained from the vendors listed below.

Airgas Safety Products

Airgas Nor Pac
3632 NE Columbia Blvd.
Portland, OR 97211
(503) 288-2527 FAX (503) 288-4627
<http://www.airgas.com>

Cole-Parmer Instrument Company

625 E. Bunker Court
Vernon Hills, IL 60061
(800) 323-4340 FAX (847) 247-2929
Email: info@coleparmer.com
<http://www.coleparmer.com>

Hagemeyer North America

(877) 462-7070
<http://www.hagemeyerna.com>

Industrial Safety Supply Corp.

P.O. Box 8686
Emeryville, CA 94662
(510) 658-0414 FAX (510) 658-0413
Email: customerservice@issc.com
<http://www.issc.com>

Lab Safety Supply

P.O. Box 1368
Janesville, WI 53547-1368
(800) 356-0783 FAX (800) 543-9910
Email: custsvc@labsafety.com
<http://www.labsafety.com>

Masune™ First Aid and Safety

500 Fillmore Avenue
Tonawanda, NY 14150
(800) 831-0894 FAX (800) 222-1934
Email: customersupport@masune.com
<http://www.masune.com>

Mallory Safety

1040 Industrial Way
PO Box 2068
Longview, WA 98632
(360) 636-5750
<http://www.malloryco.com>

New Pig Corporation

One Pork Avenue
Tipton, PA 16684-0304
(800) 468-4647 FAX (800) 621-7447
Email: hothogs@newpig.com
<http://www.newpig.com>

VACUUM CLEANERS: When cleaning up mold, soot and fine particulates, it is essential that the vacuum be equipped with a HEPA (high efficiency particulate air) filter or that the exhaust is vented outdoors or into a fume hood. Contact your local hardware or industrial supply company for vacuum cleaners. For tips on what to look for in a museum vacuum, read the “National Park Service’s Conserve-O-Gram, “Choosing a Museum Vacuum Cleaner” at <http://www.nps.gov/museum/publications/conserveogram/01-06.pdf>.

Other points to keep in mind when vacuuming collections objects: change the bag or empty the canister as soon as you are finished using the vacuum. To prevent vacuuming up pieces of objects that you don’t want to lose, cover the end of the attachment with cheesecloth or pantyhose.

Gaylord Bros.

P.O. Box 4901
Syracuse, NY 13221-4901
(800) 962-9580 FAX (800) 272-3412
<http://www.gaylord.com>

University Products, Inc.

517 Main Street
Holyoke, MA 01040
(800) 628-1912 FAX (800) 532-9281
Email: info@universityproducts.com
<http://www.universityproducts.com>

Also check out vacuum manufacturers such as Nilfisk or Miele.

VII. FUNDING RECOVERY EFFORTS

Your recovery effort and the financial implications that surround an emergency may be overwhelming. As always, it is helpful to develop some strategies for providing financial support before an emergency.

Tips

Conduct a business impact analysis for several types of emergencies as part of your vulnerability assessment. Such an analysis will help you prepare for your financial needs at the time of an emergency.

Review your **insurance coverage** and understand the implications for managing a recovery effort.

- Is your collection inventory up-to-date?
- Is there a copy of the insurance policy off-site?
- Do you need flood insurance?
- Will your insurance company cover losses in a large-scale emergency?
- What types of records are needed for documenting and reporting loss?

Make a **checklist** of practical actions to take at the time of an emergency. A sample list includes:

- Check the emergency budget
- Check in with the insurance company
- Activate the position of the person(s) with check writing privileges and authority for contract signing, purchasing supplies and paying staff
- Keep good records of expenses

Identify **sources of funding** from your institution, as well as local, state and federal resources.

An excellent resource describing federal funding opportunities is entitled *Before & After Disasters: Federal Funding for Cultural Institutions* (2005).

Heritage Emergency National Task Force

Heritage Preservation

1012 14th Street NW, Suite 1200

Washington, DC 20005

(202) 233-0800

FAX (202) 233-0807

Email: taskforce@heritagepreservation.org

<http://www.heritagepreservation.org>

Federal Emergency Management Agency (FEMA)

Federal Center Plaza
500 C Street SW
Washington, DC 20472
(202) 566-1600
<http://www.fema.gov>

Federal Emergency Management Agency (FEMA)

Regional Office, Region X

130 228th Street, SW
Bothell, WA 98021
(425) 487-4600
<http://www.fema.gov/about/regions/regionx>

Benefits.gov

<http://www.benefits.gov>

A partnership of Federal Agencies to provide access to grant assistance programs including disaster relief.

National Endowment for the Arts (NEA)

Office of Communications
1100 Pennsylvania Avenue NW
Washington, DC 20506
(202) 682-5400
<http://www.nea.gov>

SELECTED WEBSITES

Insurance Related

American Society of Appraisers
<http://www.appraisers.org>

Antiquarian Booksellers' Association of America
<http://www.abaa.com>

National Association of Independent Insurance Adjusters
<http://www.naiia.com>

Self-Insurance Institute of America (SIIA)
<http://www.siiia.org>

Society for Risk Analysis
<http://www.sra.org>

Society of Risk Management Consultants
<http://www.srmcsociety.org>

Funding Related

Federal Emergency Management Agency
<http://www.fema.gov>

Benefits.gov
<http://www.benefits.gov>

Institute of Museum & Library Services (IMLS)
<http://www.imls.gov>

National Endowment for the Humanities (NEH)
<http://www.neh.gov>

National Endowment for the Arts (NEA)
<http://www.nea.gov>

Small Business Administration
<http://www.sba.gov>

APPENDIX A: VULNERABILITY ASSESSMENT

Emergencies should be assigned numbers from 0 to 4, both for their probability and for the impact they would have on the institution. The probability of a landslide may be 0 but it would have a large impact on the institution and so it would be rated 4 in the impact category. An average of the three numbers is taken to determine the seriousness of each possible emergency. Any event with a final average of 3 or more should be considered a serious threat. *These are the events on which the emergency plan is focused.*

PROBABILITY

- 4 = highly probable (may happen within a year)
- 3 = moderately probable (may happen within 5 years)
- 2 = low probability (may happen within 10 years)
- 1 = highly improbable (may happen within 20 years or not at all)
- 0 = impossible

IMPACT

- 4 = very serious (loss of human life and/or major losses to collections)
- 3 = serious (danger to human life and/or minor losses to collections)
- 2 = somewhat serious (could endanger/disrupt humans or collections)
- 1 = relatively unimportant (likely to have no effect)
- 0 = unlikely to have an effect

INSTITUTION _____

LOCATION _____ **DATE** _____

ASSESSOR(S) _____

EVENT	PROBABILITY	IMPACT Collection	IMPACT Human	AVERAGE	HAPPENED BEFORE?
Accidental damage					
Air pollution					
Airplane accident					
Armed robbery					
Ash					
Avalanche					
Broken water/sewer line					
Chemical spill					
Civil disturbance					
Dam failure					
Dust/sandstorm					
Earthquake					
Electrical outage					
Epidemic					
Explosion					
Fire/smoke damage					
Flood					
Forest fire					
Fuel shortage					
Hurricane					
Ice storm					
Industrial accident					
Landslide					
Leaks/seepage					
Lightning/electrical storm					
Medical health emergency					
Mine disaster					
Mold					
Nuclear event					
Oil spill					

APPENDIX B: SUPPLIES AND EQUIPMENT TO BEGIN RECOVERY EFFORT

Cleaning

Brooms, large & whisk
Buckets
Cloth, soft & lint free
Disinfectant
Distilled water
Dust pans
Garbage bags
Garden hose, adjustable nozzle
Handy wipes
Mops
Paper towels
Rags/old towels
Soft brushes
Sponges, various sizes
Wet/dry vacuum cleaners

Documentation

Camera & film
Clipboard w/paper and pens
Environmental monitoring
Marking & recording supplies
Tape recorder/alternative to writing

Drying

Blotting paper
Clothesline & pins
Dehumidifiers
Drying racks (for wet paper)
Fans
Polyester web
Portable heaters
Towels
Unprinted newsprint

Miscellaneous

Batteries
Extension cords
Money

Packing & moving

Boxes
Dollies
Freezer paper
Ladders
Moving pads
Pallets
Plastic bags, assorted sizes
Plastic sheeting
Rolling carts
Scissors
String/twine/rope
Tables
Tapes (adhesive, duct, electrical, masking)

Tools

Crow bar
Hammer
Pliers
Screwdrivers
Shovel
Tape measure
Utility knives
Wire cutter
Wrenches

Safety

Chemical light sticks
Chemical spill absorbing material
Dust masks
First Aid kit
Flashlight
Gloves (latex, cotton, safety)
Hard hats
Radios, two-way and battery operated
Respirators
Signage (barricade & hazard alert)

Last Inventoried By: _____

Date: _____

***APPENDIX C: SUPPLIES AND EQUIPMENT TO BEGIN RECOVERY
FROM MOLD***

Cleaning

Brushes, soft
Disinfectant
Dry Cleaning Sponges
Garbage bags
Handy wipes
Paper towels
Rags
Sponges
Vacuum cleaner w/ HEPA filter

Identification

Magnifying Glass

Safety

First Aid kit
Gloves (latex)
Protective Clothing (apron, lab coat)
Protective eyewear
Respirator w/ HEPA filter

Monitoring/Controlling the Environment

Dehumidifiers
Environmental monitors
Fans

Last Inventoried By: _____

Date: _____

APPENDIX D: EMERGENCY CONTACT LIST

Developing a simple call list that is updated regularly is an essential tool for quick emergency response. One list should include emergency numbers (police, fire, ambulance, poison center, gas, electric, telephone, insurance). A sample Emergency Contact List follows.

Another call list to develop would include contact information for service providers that may be needed during an emergency. Providers you may want to have numbers for include:

-
- | | |
|--|--------------------------------------|
| ❖ Architect | ❖ Industrial hygienist |
| ❖ Art handlers/movers | ❖ Insurance agent |
| ❖ Building engineer | ❖ Janitorial service |
| ❖ Carpenter | ❖ Landlord |
| ❖ Cleanup assistance | ❖ Legal advisor |
| ❖ Cold storage facility | ❖ Locksmith |
| ❖ Computer equipment and data recovery specialists | ❖ Microfilm salvage service |
| ❖ Conservator | ❖ Moving assistance |
| ❖ Copy machine recovery | ❖ Mycologist |
| ❖ Copy service | ❖ Pest management |
| ❖ Dehumidification | ❖ Photography assistance |
| ❖ Electrician | ❖ Plumber |
| ❖ Elevator company | ❖ Poison control |
| ❖ Environmental control systems | ❖ Roofer |
| ❖ Fire detection/suppression system | ❖ Safety equipment rental |
| ❖ Fire damage salvage | ❖ Security agency |
| ❖ Fire extinguisher inspector | ❖ Security system |
| ❖ Food – caterers, restaurants, grocery stores | ❖ Storage facility, off-site storage |
| ❖ Delivery services | ❖ Telephone equipment repair |
| ❖ Freeze-drying facility | ❖ Telephone line repair |
| ❖ Freezer storage | ❖ Temporary personnel |
| ❖ Fumigation service | ❖ Tent rental |
| ❖ Generator rental | ❖ Utility company |
| ❖ Glass companies (industrial) | ❖ Videotape salvage companies |
| ❖ Hazardous material cleanup | ❖ Water damage salvage |

SAMPLE EMERGENCY CONTACT LIST

	NAME	CONTACT NUMBER
<i>EMERGENCY TELEPHONE NUMBER</i>		911
POLICE (Non-emergency)		
FIRE (Non-emergency)		
EMS AMBULANCE		
POISON CONTROL		
OTHER		
SERVICE PROVIDERS		
SECURITY SYSTEM		
BOARDING UP SERVICES		
LEGAL ADVISOR		
CONSERVATOR		
LOCKSMITH		
ELECTRICIAN		
PLUMBER		
INSURANCE COMPANY (PCY #)		
LANDLORD		
GAS AND ELECTRIC		
WATER/SEWER CO.		
TELEPHONE COMPANY		
DISASTER RECOVERY SERVICE		
FREEZER SPACE		
OTHER		

Updated on: _____ By _____

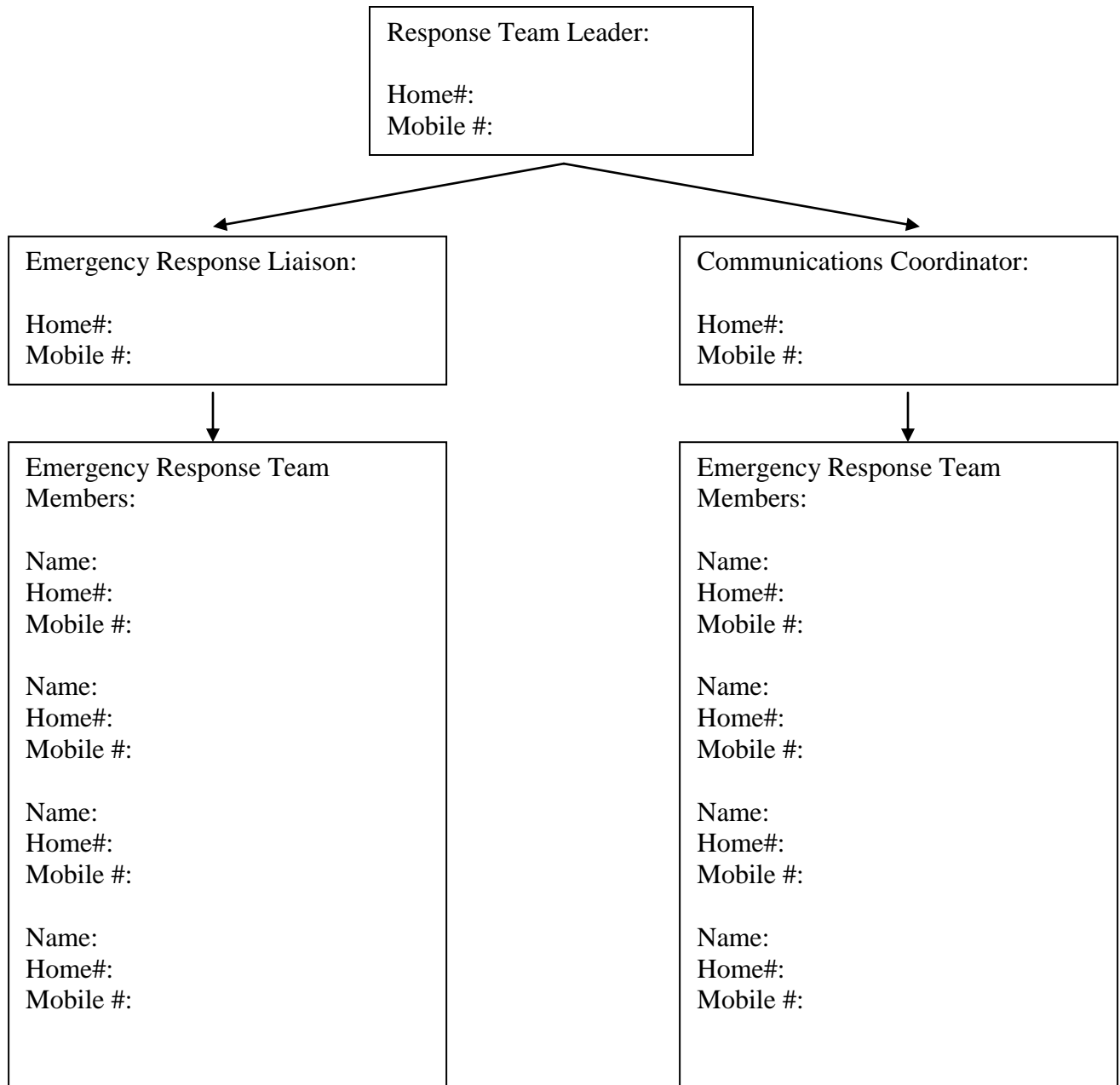
APPENDIX E: TELEPHONE TREE

Draw up a Telephone Tree to establish a notification sequence and who is responsible for contacting whom. Tree systems are such that each assigned person who receives an emergency message tells two or three others, who tell others, who might tell others. A copy should be placed next to every phone at the museum. The list should include the numbers of the Emergency Response Team that was formed during the Preparation section.

The list should be updated regularly, and a copy should also be kept offsite by the members of the Response Team and anyone who is included in the tree.

The following is just a template of a possible Telephone Tree. Your institutions tree will be structured by the Response Team you have in place and your priorities for notification.

SAMPLE TELEPHONE TREE



Last Revised By: _____
Date: _____

APPENDIX F: BIBLIOGRAPHY

- Cornu, Elizabeth and Lesley Bone. "Seismic Disaster Planning: Preventive Measures Make a Difference." WACC Newsletter 13 (3) 1991: 13-19.
- Creahan, Julie and Lori van Handel. "Seismic Protection in Museum Storage: Affordable Solutions." WAAC Newsletter 12 (3) 1990: 24.
- "Disaster Recovery: Salvaging Photograph Collections." Philadelphia: Conservation Center for Art and Historic Artifacts, 1998.
- Dorge, Valerie and Sharon L Jones (comp). Building and Emergency Plan: A Guide for Museums and Other Cultural Institutions. Los Angeles: The Getty Conservation Institute, 1999.
- Emergency Response and Salvage Wheel.TM National Institute for the Conservation of Cultural Property produced in cooperation with the National Task Force on Emergency Response, 1997.
- The Corning Flood: Museum Under Water. Corning, NY: Corning Museum of Glass, 1977.
- Lord, Allyn, Carolyn Reno and Marie Demerouks. Steal This Handbook! A Template for Creating a Museum's Emergency Preparedness Plan. Bartow, FL: Southeastern Registrars Association, 1998.
- "Managing a Mold Invasion: Guidelines for Disaster Response" from Technical Series No. 1. Philadelphia: Conservation Center for Art and Historic Artifacts, 1996.
- Motylewski, Karen. "Protecting Collections During Renovations." Andover, MA: Northeast Document Conservation Center.
- National Fire Protection Association. Protection of Museums and Museum Collections. Quincy, MA: National Fire Protection Association, 1985.
- Philadelphia Area Emergency Response Resources List*. Philadelphia: Conservation Center for Art and Historic Artifacts, 2001.
- Retherman, R. "Protection of Museum Contents from Earthquakes." In The J. Paul Getty Museum Symposium on Protection of Art objects from Damage by Earthquakes: What Can Be Done? 1984.
- Reilly, Julie. *Are You Prepared? A Guide to Emergency Planning*. Omaha, NE: The Nebraska State Library Historical Society, 1997.

APPENDIX G: CHANGES AND COMMENTS RESPONSE FORM

Oregon State Emergency Preparedness Resources

We are interested in maintaining a current resource guide. If you see a listing that needs updating, please don't hesitate to let us know. Also, if you have experience with, or information about, a vendor, service provider or supplier, please let us know. Please feel free to contact our BACC Field Service Office (wrfso@bacc.org) for information on ordering additional Emergency Resource booklets (regions currently available: WA, AZ, OR, Northern CA, and Southern CA). Thank you for your assistance and comments.

Change requested: _____

Effective Date: _____

Comments: _____

Please send changes and inquiries to:

Balboa Art Conservation Center
Attn: Western Region FSO
P.O. Box 3755
San Diego, CA 92163-3755
(619) 236-9702
Email: wrfso@bacc.org

Thank You!!

INDEX

- Abbey Newsletter, 22
Air Purifiers, 26
Airgas Safety Products, 49, 60
Alarms. *See* Water Sensing Alarms
American Association of Museums (AAM),
2
American Industrial Hygiene Association, 2
American Institute for Conservation of
Historic and Artistic Works (AIC), 2, 52
American Library Association (ALA)
Headquarters, 2
American Red Cross - Oregon Pacific
Chapter, 3
American Red Cross National Headquarters,
3
American Red Cross- Oregon Trail Chapter,
3
American Society of Appraisers, 3, 64
American Society of Appraisers - Regional
Chapter- Portland, 3
Amigos Library Services, Inc., 54
Antiquarian Booksellers Association of
America, 35
Antiquarian Booksellers' Association of
America, 64
Antique Tribal Art Dealers Association, Inc.
(ATADA), 35
Archivart, 41
Archives-L, 23
Art Handling And Moving, 26
Art Loss Register at the International
Foundation for Art Research (IFAR), 35
Art Work Fine Art Services, Inc., 26
Artech, Incorporated, 26
Artex Fine Art Service, 26
Arts, Crafts & Theater Safety, Inc. (ACTS),
32
ASIS International, 36
Atlantic Paste & Glue, 47
Aurora Plastics & Packaging, 41
Bags, 41
Bags & Bows, 46
Baker County Emergency Management, 3
Balboa Art Conservation Center, ii, 1, 54
Beaverton, City of Emergency Management,
3
Beflor, USA, 27, 28, 30, 37
Belfor, USA, 27, 28, 30, 37
Benefits.gov, 63, 64
Benton County Emergency Services, 4
BIBLIOGRAPHY, 74
Blackmon-Mooring-Steamatic Catastrophe,
Inc., 27, 28, 30, 33, 37
Boarding-Up Services, 26
Boxes, 42
Brushes, 43, 58
Building Inspectors, 26
Canby Police Department, 4
Carpet Cleaners, 26
Cascades Volcano Observatory, 4
Cascadia Region Earthquake Workgroup
(CREW), 4
Centers for Disease Control and Prevention
(CDC), 4
Challenge Industries Microfilm, 33
CHANGES AND COMMENTS
RESPONSE FORM, 75
Chicago Albumen Works, 34
City of Salem Emergency Information, 17
Clackamas County Emergency
Management, 4
Clatsop County Emergency Management, 5
Cole-Parmer Instrument Company, 49, 60
Columbia County Homeland Security and
Emergency Management, 5
Community Emergency Response Team
(CERT), 5
Computer Data Recovery, 27
Confederated Tribes of the Umatilla Indian
Reservation, 5
Conservation Center for Art and Historic
Artifacts (CCAHA), 56
Conservation Dist List, 23
Conservation OnLine, 21
Conservation Resources International LLC,
41
Consolidated Plastics Company, Inc, 42
Consolidated Plastics Company, Inc., 41, 46
Contingency Planning & Management, 22

Cooke's Crating & Fine Art Transportation, 26
 Coos County Emergency Management, 5
 Coquille Indian Tribe Emergency Management, 5
 Corvallis, City of, 4
 Crook County Emergency Services Management, 6
 Curry County Emergency Services Department, 6
 Data Logger Store, 44, 58
 Debris Removal, 28
 Dehumidification, 28
 Dehumidifiers, 43, 58
 Department of Homeland Security, 6
 Dickson Instruments Company, 44, 58
 Disaster Recovery Journal, 22
 Disinfectants, 44, 58
 Disposable Cameras, 44
 Distilled Water, 44
 Document Reprocessors, 28, 31, 33
 Dorlen Products Inc.. *See* Alarms
 Douglas County Emergency Services, 6
 dPlan - The Online Disaster Planning Tool, 21, 40
 Electricity, 29
 Emergency Email Network, 7
 Emergency Supplies, 45
 EMERGENCY TELEPHONE LISTS, 70
 Environmental Information Association, 32
 Environmental Monitors, 44
 Environmental Protection Agency, 7, 32
 Environmental Protection Agency (EPA), 32, 48
 Estacada, City of, 7
 Eugene, City of, 7
 Fans, 45, 59
 FBI, 36
 Federal Emergency Management Agency, 64
 Federal Emergency Management Agency (FEMA), 7, 8, 22, 63
 Fencing, 45
 Fire and Water Damage Salvage, 29
 Fire Protection Consultants, 29
 First Aid Instruction, 29
 First Aid Supplies, 29
 First-Aid Kits, 45
 Fisher Scientific Company, 44, 58
 Fishing Line, 45
 Flood Assistance, 29
 Food, 30
 FP International, 46
 Freeze Drying, 30
 Freezer Paper, 45
 Freezer Storage Facilities, 31
 Gaylord Bros., 41, 42, 43, 44, 45, 47, 50, 58, 59, 61
 Generator Rental, 45
 Gerald R. Ford Conservation Center, 55
 Gilliam County Emergency Services, 8
 Gladstone, City of, 8
 Global Industrial, 46, 49
 Gloves, 46, 59
 Grant County Emergency Management, 8
 Gresham Fire and Emergency Services, 8
 Gresham, City of, 8
 Hagemeyer North America, 49, 60
 Harney County Emergency Services, 8
 Hazardous Material, 31
 Heritage Emergency National Task Force, 9, 62
 Heritage Preservation, 9, 62
 Hillsboro Fire & Rescue Department, 9
 Hollinger Metal Edge, 41
 Hollinger Metal Edge, Inc., 42
 Home Depot, 48
 Hood River County Emergency Management, 9
 Hoses, 46
 Inclusive Preparedness Center, 9
 Industrial Safety Supply Corp., 49, 60
 Insects Limited, Inc., 47
 Institute for Crisis Management (ICM), 9
 Institute for Home & Business Safety (IBHS), 10
 Institute of Museum & Library Services, 21, 40
 Institute of Museum & Library Services (IMLS), 10, 64
 Insurance Information Institute, 10
 Intermuseum Conservation Association, 55

Interpol, 36
 IPI (Image Permanence Institute), 44, 59
 Jackson County Emergency Management, 10
 Jefferson County Emergency Services, 10
 Josephine County Emergency Management, 10
 Klamath County Emergency Services, 11
 Lab Safety Supply, 49, 60
 Lake County Emergency Services, 11
 Lane County Emergency Management, 11
 Leak Detection
 Tyco Thermal Controls, 51
 Library of Congress Preservation Directorate, 56
 Library of Congress, Preservation Directorate, 11
 Lightsticks, 43
 Lile Logistics Fine Art Shipping, 26
 Lincoln County Emergency Services, 11
 Linn County Emergency Services, 11
 LYRASIS, 22, 54
 Magnifying Glass, 60
 Malheur County Emergency Services, 11
 Marion County Emergency Management, 12
 Masune™ First Aid and Safety, 49, 60
 Microfilm, 33
 Midwest Art Conservation Center, 55
 Molalla, City of, 12
 Monitors
 Environmental, 58
 Morrow County Emergency Management, 12
 Multnomah County Department of Emergency Management, 12
 Munters, 29, 38
 Museum Security Network, 23
 Museum Security Network (MSN), 36
 Museum-L, 23
 National Association of Independent Insurance Adjusters, 64
 National Earthquake Information Center (NEIC), 12
 National Endowment for the Arts, 64
 National Endowment for the Arts (NEA), 63
 National Endowment for the Humanities (NEH), 13, 64
 National Fire Protection Association, 13
 National Fire Protection Association (NFPA), 13
 National Flood Insurance Program (NFIP), 13
 National Institute for Occupational Safety and Health (NIOSH), 14, 48
 National Institute of Environmental Health Sciences, 32
 National Oceanic and Atmospheric Administration (NOAA), 14
 National Park Service, 56, 61
 National Stolen Art File, 36
 New Pig Corporation, 49, 60
 Newsprint, 46
 Nilfisk-Advance America Inc, 50
 Northeast Document Conservation Center, 21, 22, 34, 40
 Northeast Document Conservation Center (NEDCC), 56
 Occupational Safety and Health Administration (OSHA), 14, 15, 48
 One Way Solutions, 47
 Onset Corp., 44, 59
 Oregon Department of Forestry, 15
 Oregon Department of Geology & Mineral Industries (DOGAMI), 15
 Oregon Disaster Medical Team (ODMT), 15
 Oregon Emergency Management (OEM), 15
 Oregon Emergency Management Association (OEMA), 16
 Oregon Emergency Response System (OERS), 16
 Oregon Historic Preservation, 23
 Oregon Office of Homeland Security - Counter-Terrorism Section, 16
 Oregon Partnership for Disaster Resilience, 16
 Oregon Poison Center, 34
 Oregon Voluntary Organizations Active in Disaster (ORVOAD), 16
 Packing Supplies, 46
 Pallets, 46
 Peebles Island Resource Center, 56

Pelican Products, 45
 Peregrine Brushes and Tools, 43, 58
 Pest Control, 33
 Pestlist, 24
 Photographs
 Negatives, 34
 Plastic Sheeting, 48
 Poison, 34
 Polk County Emergency Management, 16
 Polygon, 29, 38
 Portland Emergency Management, 17
 Preparedness Industries Inc, 43
 Preservation Resource Group, 51
 PreserveNW, 24
 PROTEXT, Inc., 42, 45, 59
 Public Relations Society of America
 (PRSA), 17
 Radios, 48
 RCAAM, 24
 Ready.gov, 22
 Red-D-Arc, Inc., 49
 Regional Alliance for Preservation (RAP),
 17, 22, 53
 RESCUBE®, 42, 43
 Respirators, 48, 60
 Response and Recovery Providers, 37
 Robert E. White Instruments, Inc., 44, 59
 SAFETY SUPPLIES AND EQUIPMENT,
 60
 Safety Supplies, Equipment, 48
 Security Services, 34
 Self-Insurance Institute of America (SIIA),
 64
 Sherman County Emergency Services, 17
 Signage, 49
 Small Business Administration, 64
 Society for Risk Analysis, 64
 Society of Risk Management Consultants,
 64
 SOLEX Environmental Systems, Inc., 31
 Springfield Emergency Management, 17
 Storage, 35
 Talas, 41, 43, 44, 58, 59
 Tent, 49
 Textile Conservation Workshop, 56
 The Society of American Archivists (SAA),
 37
 Theft, 35
 Thomas Scientific, 59
 Tigard Emergency Management Program,
 17
 Tillamook County Emergency Management,
 18
 Toilet, 49
 Tools, 49
 Traps, Pests and Insects, 47
 Tualatin Police Department, 18
 Tualatin Valley Fire & Rescue, 18
 Uline, 46
 Umatilla County Emergency Management,
 18
 Union County Emergency Management, 18
 United States National Archives & Records
 Administration (NARA), 19
 University Products, 59
 University Products, Inc., 41, 42, 43, 47, 50,
 58, 59, 61
 US Art, 26
 US Art – Los Angeles Region, 26
 US Consumer Product Safety Commission,
 33
 USGS, 18, 19
 Vacuum Cleaners, 50, 51, 61
 VersaCold, 30
 VULNERABILITY ASSESSMENT, 65
 Wallowa County Department of Emergency
 Services, 19
 Warm Springs Indian Reservation, 19
 Wasco County Emergency Services, 19
 Washington County Office of Consolidated
 Emergency Management, 19
 Water Monitoring
 Stevens Water Monitoring Systems, 51
 Water Sensor
 Sonin, Inc., 51
 Waterproof Clothing, 51
 West Coast and Alaska Tsunami Warning
 Center, 19
 Western Association for Art Conservation
 Newsletter, 22

Western States Seismic Policy Council
(WSSPC), 20
WESTPAS- Western States & Territories
Preservation Assistance Service, 54

Wheeler County Emergency Services, 20
Wilsonville Directory, 20
Woodburn Emergency Services, 20
Yamhill County Emergency Services, 20